

**TECHNICAL MANUAL**

**OPERATOR'S, ORGANIZATIONAL, DIRECT SUPPORT, AND  
GENERAL SUPPORT MAINTENANCE  
REPAIR PARTS AND SPECIAL TOOLS LIST**

**RECORDER-REPRODUCER  
RD-413/ARD-22**

This publication is not available through AG Publications. Requisition through U.S. Army Security Agency, Materiel Support Command, Vint Hill Farms, Warrenton, VA 22186

---

**HEADQUARTERS, DEPARTMENT OF THE ARMY  
OCTOBER 1976**

OPERATOR'S, ORGANIZATIONAL, DIRECT SUPPORT, AND  
 GENERAL SUPPORT MAINTENANCE  
 REPAIR PARTS AND SPECIAL TOOLS LISTS  
 FOR  
 RECORDER - REPRODUCER  
 RD-413/ARD-22  
 Current as of 15 September 1975

Table of Contents

Section	Page	Illus. Figure
I. INTRODUCTION.....	1	
Scope .....	1	
General .....	1	
Explanation of Columns .....	1	
Special Information .....	7	
How to Locate Repair Parts.....	8	
Abbreviations .....	9	
Recommendation for Maintenance Publications Improvements .....	9	
II. BASIC ISSUE ITEMS LIST (Not Applicable)		
III. ITEMS TROOP INSTALLED OR AUTHORIZED LIST (Not Applicable)		
IV. REPAIR PARTS LIST .....	10	
Recorder-Reproducer RD-413/ARD-22 (Sheet 1 of 2).....	31	1
Recorder-Reproducer RD-413/ARD-22 (Sheet 2 of 2) .....	33	1
Magnetic Cartridge Unit A1 .....	35	2
Logic Control CCA A1A1 .....	36	3
Electrical Receptical Connector A1A1P1, A1A2P1, A1A3P1, A1A4P1, A1A5P1, or A1A6P1.....	37	4
Read-Write Logic CCA A1A2 (Sheet 1 of 2) .....	38	5
Read-Write Logic CCA A1A2 (Sheet 2 of 2) .....	39	5

Table of Contents (Continued)

Section	Page	Illus Figure
IV. REPAIR PARTS LIST (Continued)		
Read Data Sync CCA A1A3.....	40	6
Tape Motion Control CCA A1A4 (Sheet 1 of 2).....	41	7
Tape Motion Control CCA A1A4 (Sheet 2 of 2) .....	42	7
Interface Reader CCA AA5.....	43	8
Write Interface CCA A1A6.....	44	9
Wiring Harness A1W1 .....	45	10
Electrical Plug Connector A1W1P11, A1Z1P7 or A1Z1P8 .....	46	11
Magnetic Tape Transport A1Z1 .....	47	12
Electrical Special Cable Assembly W1 .....	49	13
Electrical Special Cable Assembly W2 .....	50	14
Electrical Special Cable Assembly W3 .....	51	15
Electrical Special Cable Assembly W4 .....	52	16
V. SPECIAL TOOLS LIST (Not Applicable)		
VI. NATIONAL STOCK NUMBER AND PART NUMBER INDEX .....	53	

BASIC ISSUE ITEMS LIST AND ITEMS TROOP INSTALLED OR AUTHORIZED  
LIST AND ORGANIZATIONAL, DIRECT SUPPORT, AND GENERAL  
SUPPORT MAINTENANCE REPAIR PARTS AND SPECIAL TOOLS LIST

Section I. INTRODUCTION

1. Scope.

This manual lists basic issue items; items troop installed or authorized, repair parts; special tools; test measurement, and diagnostic equipment (TMDE); and other support equipment required for operation and performance of organizational, and general support maintenance of the Recorder-Reproducer RD-413/ARD-22.

2. General.

This Basic Issue Items, Items Troop Installed or Authorized, Repair Parts and Special Tools List is divided into the following sections: a. Section II. Basic Issue Items List. Not applicable.

b. Section III. Items Troop Installed or Authorized List. Not applicable.

c. Section IV. Repair Parts List. A list of repair parts authorized for use in the performance of maintenance. The list also includes parts which must be removed for replacement of the authorized parts. Parts lists are composed of functional groups in ascending numerical sequence, with the parts in each group listed in figure and item number sequence. Bulk materials are listed in NSN sequence.

d. Section V. Special Tools List. Not applicable.

e. Section VI. National Stock Number and Part Number Index. A list, in ascending numerical sequence, of all National stock numbers appearing in the listings, followed by a list, in alphanumeric sequence, of all part numbers referenced to each illustration figure and item number appearance. This index is followed by a cross-reference list of reference designations to figure and item numbers when applicable.

3. Explanation of Columns.

The following provides an explanation of columns found in the tabular listings:

a. Illustration. This column is divided as follows:

(1) Figure Number. Indicates the figure number of the illustration in which the item is shown.

(2) Item Number. The number used to identify each item called out in the illustration.

b. Source, Maintenance, and Recoverability Codes (SMR).

(1) Source Code. Source codes are assigned to support items to indicate the manner of acquiring support items for maintenance, repair, or overhaul of end items. Source codes are entered in the first and second positions of the Uniform SMR Code format as follows:

Code	Definition
PA	Item procured and stocked for anticipated or known usage.
PB	Item procured and stocked for insurance purpose because essentiality dictates that a minimum quantity be available in the supply systems.
PC	Item procured and stocked and which otherwise would be coded PA except that it is deteriorative in nature.
PD	Support item, excluding support equipment, procured for initial issue or outfitting and stocked only for subsequent or additional issues or outfittings. Not subject to automatic replenishment.
PE	Support equipment procured and stocked for initial issue or outfitting to specified maintenance repair activities.
PF	Support equipment which will not be stocked but which will be centrally procured on demand.
PG	Item procured and stocked to provide for sustained support for the life of the equipment. It is applied to an item peculiar to the equipment which, because of probable discontinuance or shutdown of production facilities, would prove uneconomical to reproduce at a later time.

Code	Definition
KD	An item of a depot overhaul/repair kit and not purchased separately. Depot kit defined as a kit that provides items required at the time of overhaul or repair.
KF	An item of a maintenance kit and not purchased separately. Maintenance kit defined as a kit that provides an item that can be replaced at organizational or intermediate levels of maintenance.
KB	Item included in both a depot overhaul/repair kit and a maintenance kit.
MO	Item to be manufactured or fabricated at organizational level.
MF	Item to be manufactured or fabricated at the direct support maintenance level.
MH	Item to be manufactured or fabricated at the general support maintenance level.
MD	Item to be manufactured or fabricated at the depot maintenance level.
AO	Item to be assembled at organizational level.
AF	Item to be assembled at direct support maintenance level.
AH	Item to be assembled at general support maintenance level.
AD	Item to be assembled at depot maintenance level.
XA	Item is not procured or stocked because the requirements for the item will result in the replacement of the next higher assembly.
XB	Item is not procured or stocked. If not available through salvage, requisition.

Code	Definition
XD	A support item that is not stocked. When required, item will be procured through normal supply channels.

**NOTE**

**Cannibalization or salvage may be used as a source of supply for any items source coded above except those coded XA, XD, and aircraft support items as restricted by AR 700-42.**

(2) Maintenance Code. Maintenance codes are assigned to indicate the levels of maintenance authorized to USE and REPAIR support items. The maintenance codes are entered in the third and fourth positions of the Uniform SMR Code format as follows:

(a) The maintenance code entered in the third position will indicate the lowest maintenance level authorized to remove, replace, and use the support item. The maintenance code entered in the third position will indicate one of the following levels of maintenance:

Code	Application/Explanation
C	Crew or operator maintenance performed within organizational maintenance.
O	Support item is removed, replaced, used at the organizational level.
I	Support item is removed, replaced, used by the direct support element of integrated direct support maintenance.
F	Support item is removed, replaced, used at the direct support level.
H	Support item is removed, replaced, used at the general support level.
D	Support items that are removed, replaced, used at depot, mobile depot, specialized repair activity only.

**NOTE**

**Codes "I" and "F" will be considered the same by direct support units.**

(b) The maintenance code entered in the fourth position indicates whether the item is to be repaired and identifies the lowest maintenance level with the capability to perform complete repair (i.e., all authorized maintenance functions). This position will contain one of the following maintenance codes:

Code	Application/Explanation
O	The lowest maintenance level capable of complete repair of the support item is the organizational level.
F	The lowest maintenance level capable of complete repair of the support item is the direct support level.
H	The lowest maintenance level capable of complete repair of the support item is the general support level.
D	The lowest maintenance level capable of complete repair of the support item is the depot level, performed by the Materiel Support Command Depot Activity.
L	Repair restricted to designated specialized repair activity.
Z	Nonreparable. No repair is authorized.
B	No repair is authorized. The item may be reconditioned by adjusting, lubricating, etc., at the user level. No parts or special tools are procured for the maintenance of this item.

(3) Recoverability Code. Recoverability codes are assigned to support items to indicate the disposition action on unserviceable items. The recoverability code is entered in the fifth position of the Uniform SMR Code format as follows:

Recoverability Codes	Definition
Z	Nonreparable item. When unserviceable, condemn and dispose at the level indicated in position 3.



Recoverability Codes	Definition
O	Reparable item. When uneconomically reparable, condemn and dispose at organizational level.
F	Reparable item. When uneconomically reparable, condemn and dispose at the direct support level.
H	Reparable item. When uneconomically reparable, condemn and dispose at the general support level.
D	Reparable item. When beyond lower level repair capability, return to depot. Condemnation and disposal not authorized below depot level.
L	Reparable item. Repair, condemnation, and disposal not authorized below depot/specialized repair activity level.
A	Item requires special handling or condemnation procedures because of specific reasons (i.e., precious metal content, high dollar value, critical material or hazardous material). Refer to appropriate manuals/directives for specific instructions.

c. National Stock Number. Indicates the Federal Stock Number assigned to the item and will be used for requisitioning purposes.

d. Part Number. Indicates the primary number used by the manufacturer (individual, company, firm, corporation, or Government activity), which controls the design and characteristics of the item by means of its engineering drawings, specifications standards, and inspection requirements, to identify an item or range of items. For BIIL and ITIAL, see explanation of description column, para f.

**NOTE**

**When a stock numbered item is requisitioned, the repair part received may have a different part number than the part being replaced.**

e. Federal Supply Code for Manufacturer (FSCM). The FSCM is a 5digit numeric code listed in SB 708-42 which is used to identify the manufacturer, distributor, or Government agency, etc. For BIIL and ITIAL, see explanation of description column, para f.

f. Description. Indicates the Federal item name and, if required, a minimum description to identify the item. (In BIIL and ITIAL only, the following will be used: "The last line for each item in the BIIL and ITIAL indicates the part number with the FSCM in parentheses"). Items that are included in kits and sets are listed below the name of the kit or set with the quantity of each item in the kit or set indicated in the quantity incorporated in unit column. When the part to be used differs between serial numbers of the same model, the effective serial numbers are shown as the last line of the description. In the Special Tools List, the initial Basis of Issue (BOI) appears as the last line in the entry for each special tool, TMDE, and support equipment. When density of equipments supported exceeds density spread indicated in the basis of issue, the total authorization is increased accordingly.

g. Unit of Measure (U/M). Indicates the standard of the basic quantity of the listed item as used in performing the actual maintenance function. This measure is expressed by a two-character alphabetical abbreviation (e.g., ea, in, pr, etc.). When the unit of measure differs from the unit of issue, the lowest unit of issue that will satisfy the required units of measure will be requisitioned.

h. Quantity Furnished With Equipment (Basic Issue Items Only). Indicates the quantity of the basic issue item furnished with the equipment.

i. Quantity Authorized (Items Troop Installed or Authorized Only). Indicates the quantity of the item authorized to be used with the equipment.

j. Quantity Incorporated in Unit. Indicates the quantity of the item used in the breakout shown on the illustration figure, which is prepared for a functional group, subfunctional group, or an assembly. A "V" appearing in this column in lieu of a quantity indicates that no specific quantity is applicable (e.g., shims, spacers, etc.).

4. Special Information.

a. Usable on codes are shown in the description column. Uncoded items are applicable to all models.

b. When details of an assembly are shown on another text page, the description of that assembly is followed by a notation stating where those details can be located.

c. When an item has limited effectivity within a model, the limitation will be indicated by an entry following the item description.

d. Action change codes indicated in the left-hand margin of the listing page denote the following: (Applicable to revisions or changes only).

- N - Indicates an added item
- C - Indicates a change in data
- R - Indicates a change in NSN only

e. The following publications pertain to the Recorder-Reproducer and its components:

Publication and Short Title  
AR 700-42

Federal Supply Code for Manufacturers-United States and  
Canada -Code to Name (Cataloging Handbook H4-2).

TM 32-5895-003-14

Operator, Organizational, Direct Support, and General  
Support Maintenance Manual: Recorder-Reproducer  
RD-413/ARD-22.

5. How to Locate Repair Parts.

a. When National Stock Number or Part Number is Unknown.

(1) First. Using the table of contents, determine the assembly or subassembly within which the repair part belongs. This is necessary since illustrations are prepared for assemblies or subassemblies and listings are divided into the same groups.

(2) Second. Find the illustration covering the assembly or subassembly to which the repair part belongs.

(3) Third. Identify the repair part on the illustration and note the illustration figure and item number of the repair part.

(4) Fourth. Using the Repair Parts Listing, find the figure and item number noted on the illustration.

b. When National Stock Number or Part Number is Known.

(1) First. Using the Index of National Stock Numbers and Part Numbers, find the pertinent National stock number or part number. This index is in ascending NSN sequence followed by a list of part numbers in ascending alphameric sequence, cross-referenced to the illustration figure number and item number.

(2) Second. After finding the figure and item number, locate the figure and item number in the repair parts list.

## 6. Abbreviations.

Abbreviation	Explanation
CCA	Circuit Card Assembly
ECA	Electronic Component Assembly
NHA	Next Higher Assembly
NSN	National Stock Number

## 7. Recommendation for Maintenance Publications Improvements.

You can help to improve this manual by calling attention to errors and by recommending improvements. Your letter or DA Form 2028 (Recommended Changes to Publications) should be mailed directly to Commander, US Army Security Agency, Materiel Support Command, ATTN: IAMNMP, Vint Hill Farms, Warrenton, Virginia 22186. A reply will be furnished directly to you.

Section IV. REPAIR PARTS LIST

ILLUSTRATION		SMR CODE	NATIONAL STOCK NUMBER	PART NUMBER	FSCM	DESCRIPTION	U/M	QTY INC IN UNIT
(a) FIG NO.	(b) ITEM NO.							
1				0423-1-4231-1	15942	CARTRIDGE,TAPE RECORDER	EA	1
1	1			0423-1-3092-1	15942	BRACKET,DOUBLE ANGLE	EA	1
1	2	5305-00-059-3656		MS51958-60	96906	SCREW,MACHINE: 110-32X0.312L)	EA	10
1	3	5310-00-619-1148		M515795-808	96906	WASHER,FLAT: (NO. 10)	EA	4
1	4	5310-00-933-8120		MS35338-138	96906	WASHER,LOCK: (SPLIT NO 10)	EA	4
1	5			200P35CT	15755	TRANSFORMER,POWER	EA	1
1	6	5940-00-983-6046		37TBT85	81349	TERMINAL BOARD: (5 DBL SCR TYPE)	EA	1
1	7			M5S600-8XP1A	75382	STRIP,MARKING	EA	2
1	8	5305-00-088-9665		MS24693C29	96906	SCREW,MACHINE: (6-32 X .625L)	EA	4
1	9	5310-00-880-5976		MS15795-806	96906	WASHER,FLAT: (5/32 IN. ID)	EA	4
1	10	5310-00-929-6395		MS35338-136	96906	WASHER,LOCK: (SPLIT NO 6)	EA	16
1	11			NAS671-66	8,0205	NUT,PLAIN,HEXAGON: INO 6-32)	EA	10
1	12			0423-1-3166-1	15942	CABLE ASSY,SP,ELECTRICAL: SEE FIGURE 15	EA	1
1	13			RH10-0-5-3	91637	RESISTOR,FIXED,WIRE WOUND	EA	2
1	14	5305-00-814-1707		NAS662C2R4	80205	SCREW,MACHINE: (2-56 X .250L)	EA	8
1	15	5310-00-595-6761		MS15795-802	96906	WASHER,FLAT: (NO. 2)	EA	8
1	16	5310-00-928-2690		MS35338-134	96906	WASHER,LOCK: (SPLIT NO 2)	EA	8
1	17			NA5671-62	80205	NUT,PLAIN,HEXAGON: (NO 2-56)	EA	8
1	18			VN25A5A	15755	POWER SUPPLY	EA	1
1	19	5305-00-050-9227		M551957-61	96906	SCREW,MACHINE: (10-24 X .375L)	EA	1
1	20			0423-1-3094-1	15942	BRACKET,MOUNTING,DIODE	EA	1
1	21			JANTX1N3323B	81349	SEMICONDUCTOR DEVICE,DIODE	EA	2
1	22	5305-00-993-9189		MS24693C2	96906	SCREW,MACHINE: (4-40 X .250L)	EA	70
1	23			RH5-200-3	91637	RESISTOP,FIXED,WIRE WOUND	EA	2
1	24	5821-00-140-8912		OVP5-11	15755	PROTECTOR,OVER VOLTAGE	EA	1
1	25	5305-00-054-6650		M551957-26	96906	SCREW,MACHINE: (6-32 X .250L)	EA	8
1	26			0423-1-3091-1		BRACKET,MOUNTING.SWITCH	EA	1
1	27			MS15795-803	96906	WASHER,FLAT: (NO. 4)	EA	39
1	28	5310-00-803-4663		H01-04	15653	NUT,SELFLOCKING,HEXAGON: (NO 4)	EA	9
1	29			CG952U035V3C33PH	90201	CAPACITOR,FIXED,ELECTROLYTIC	EA	2
1	30	5910-00-151-7564		VR8	37942	CLAMP,CAPACITOR	EA	2
1	31	5305-00-054-6656		M551957-32	96906	SCREW,MACHINE: (6-32X0.750L)	EA	2
1	32	5310-00-965-1802		M515795-804	96906	WASHER,FLAT: (1/4 IN. ID)	EA	12
1	33			0423-1-3090-1	15942	BRACKET,ANGLE	EA	1
1	34			0423-1-3095-1	15942	BRACKET,ANGLE	EA	1
1	35	5310-00-933-8118		MS35338-135	96936	WASHER,LOCK: (SPLIT NO 4)	EA	29
1	36			NAS671-64	80205	NUT,PLAIN,HEXAGON: (4-40)	EA	26
1	37			0423-1-3097-1	15942	INSULATOP,PLATE	EA	1
1	38	5961-00-484-4604		JANTX1N3891	81349	SEMICONDUCTOR DEVICE,DIOOE	EA	2
1	39			SE26-1	11452	TERMINAL,STUD	EA	2
1	40			0423-1-3096-1	15942	PLATE,MOUNTING,RECTIFIER	EA	1
1	41	5961-00-189-3175		JANTX1N3891R	81349	SEMICONDUCTOR DEVICE,DIODE	EA	2
1	42			0423-1-4174-1	15942	COVER,TOP	EA	1
1	43			0423-1-5019-1	15942	CHASSIS,ELECTRICAL EQUIPMENT	EA	1
1	44			10-120920-1	28815	CARTRIDGE UNIT,MAGNETIC TAPE: SEE FIGURE 2	EA	1
1	45	5305-00-054-6667		M551957-42	96906	SCREW,MACHINE: (8-32 X .312L)	EA	6
1	46			0423-1-5018-1	15942	BASE PLATE,RECORDER	EA	1
1	47			CP09A1KE274KE	81349	CAPACITOR,FXD,PAPR DIELECTRIC : (0.27UF,IOPCT,400V)	EA	1
1	48			M24066-2-132	81349	CLIP,SPRING TENSION: (CAD PL BERYLLIUM)	EA	1

Section IV. REPAIR PARTS LIST

ILLUSTRATION		SMR CODE	NATIONAL STOCK NUMBER	PART NUMBER	FSCM	DESCRIPTION	U/M	QTY INC IN UNIT
(a) FIG NO.	(b) ITEM NO.							
1	49		5305-00-056-9961	MS24693C4	96906	SCREW,MACHINE: (4-40 X .375L)	EA	4
1	50		5310-00-058-3599	MS35335-57	96906	WASHER,LOCK: (NO 4 EXT TOOTH)	EA	3
1	51		5310-00-810-7785	NAS671-4	80205	NUT,PLAIN,HEXAGON: (NO 4-40)	EA	2
1	52			N276	08863	INSULATOR	EA	6
1	53		5305-00-780-8454	M5S24693C7	96906	SCREW,MACHINE: (4-40 X .625L)	EA	2
1	54			805ZS	82877	FAN, AXIAL	EA	1
1	55		5305-00-225-6400	MS24693C3	96906	SCREW,MACHINE: (4-40 X .312L)	EA	24
1	56		5340-00-984-6629	14015	82877	NUT,CLAMP	EA	4
1	57			4814-1-05-19	71279	TERMINAL,STUD	EA	2
1	58			0423-1-3008-1	15942	SPACER,FAN	EA	1
1	59		5305-00-054-5651	MS51957-17	96906	SCREW,MACHINE: (4-40 X .500L)	EA	4
1	60			0423-1-4250-1	15942	CABLE ASSY,SP,ELECTRICAL: SEE FIGURE 13	EA	1
1	61			0423-1-3093-1	15942	BRACKET, ANGLE	EA	1
1	62		5305-00-988-1723	MS35206-279	96906	SCREW,MACHINE: (1/4-20X0.500L)	EA	4
1	63		5310-00-550-5054	NS15795-809	96906	WASHER,FLAT: (1/4)	EA	4
1	64		5310-00-933-8121	M5S35338-139	96906	WASHER,LOCK: (SPLIT 114)	EA	4
1	65			0423-1-3158-1	15942	CABLE ASSY,SP,ELECTRICAL: SEE FIGURE 14	EA	1
1	66			MDX3	71400	FUSE,CARTRIDGE	EA	1
1	67		5920-30-556-0144	342025	75915	FUSEHOLDER	EA	1
1	68			0423-1-2075-1	15942	PLATE,MOUNTING	EA	2
1	69		5305-00-054-6651	M551957-27	96906	SCREW,MACHINE: (6-32X0.312L)	EA	4
1	70			0423-1-4068-1	15942	PANEL,INTAKE	EA	1
1	71			0423-1-3167-1	15942	CABLE ASSY,SP,ELECTRICAL: SEE FIGURE 16	EA	1
1	72			0423-1-4175-1	15942	PANEL,FRONT	EA	1
1	73			01-145210	28815	SWITCH,PUSH	EA	1
1	74			01-931313	28815	LENS,CAP,GREEN	EA	1
1	75			1775	71744	LAMP,INCANDESCENT	EA	1
1	76			10233550832	06540	HANDLE, BOW	EA	2
1	77		5305-00-889-2991	M5S24693C48	96906	SCREW,MACHINE: (B8-32 X .375L)	EA	4
1	78			HDH4	94570	HOOK,LIFTING	EA	2
1	79		5305-00-054-6668	M551957-43	96906	SCREW,MACHINE: (8-32 X .375L)	EA	4
1	80			0423-1-3200-9	15942	PLATE,IDENTIFICATION	EA	1
1	81		5305-00-054-5646	MS51957-12	96906	SCREW,MACHINE: (4-40 X .188L)	EA	2
	BULK		8030-00-163-5792	VC3	04866	COMPOUND,LOCKING	LB	

Section IV. REPAIR PARTS LIST - Continued

ILLUSTRATION		SMR CODE	NATIONAL STOCK NUMBER	PART NUMBER	FSCM	DESCRIPTION	U/M	QTY INC IN UNIT
(a) FIG NO.	(b) ITEM NO.							
2				10-120920-1	28815	CARTRIDGE UNIT,MAGNETIC TAPE: SEE NHA FIGURE 1		
2	1			12-117699-2	28815	PLATE,SIOE	EA	1
2	2		5305-00-993-9189	MS24693C2	96906	SCREW,MACHINE: (4-40 X .253L)	EA	28
2	3			10-118754-1	28815	CIRCUIT CARD ASSEMBLY: SEE FIGURE 9	EA	1
2	4			10-118744-1	28815	READER,INTERFACE: SEE FIGURE 8	EA	1
2	5			12-117717-1	28815	BRACKET,DOUBLE ANGLE	EA	1
2	6		5305-00-054-5649	MS51957-15	96906	SCREW,MACHINE: (4-40 X .375L)	EA	18
2	7			MS15795-803	96906	WASHER,FLAT: (NO. 4)	EA	34
2	8		5310-00-933-8118	MS35338-135	96906	WASHER,LOCK: (SPLIT NO 4)	EA	34
2	9			12-117710-1	28815	BAR,CARD CAGE	EA	1
2	10		5305-00-054-5647	MS51957-13	96906	SCREW,MACHINE: (4-40X .250L)	EA	2
2	11		5935-00-044-4145	MS3112E8-3S	96906	CONNECTOR,RECEPTICAL,ELEC: (3 CONTACTS)	EA	1
2	12			NAS671-64	80205	NUT,PLAIN,HEXAGON: (4-40)	EA	18
2	13		5935-00-137-8901	MS27506A22-2	96906	ADAPTER,CONNECTOR: (SHELL SIZE 22)	EA	1
2	14			MS27473E22A1P	96906	CONNECTOR,PLUG,ELECTRICAL: (100 PIN)	EA	1
2	15			10-118580-3	28815	WIPING HARNESS: SEE FIGURE 10	EA	1
2	16		5935-00-715-2756	MS3126F10-6S	96906	CONNECTOR,PLUG,ELECTRICAL: (6 CONTACTS)	EA	1
2	17		5935-00-901-5782	MS3112E10-6P	96906	CONNECTOR,RECEPTICAL,ELEC: 16 CONTACTS	EA	1
2	18			10-118704-1	28815	CONTROL,LOGIC: SEE FIGURE 3	EA	1
2	19			10-118714-1	28815	READ-WRITE LOGIC: SEE FIGURE 5	EA	1
2	20			10-118724-1	28815	READ DATA SYNC: SEE FIGURE 6	EA	1
2	21			10-118734-1	28815	TAPE MOTION CONTROL: SEE FIGURE 7	EA	1
2	22			10-117719-1	28815	TRANSPORT,MAGNETIC TAPE: SEE FIGURE 12	EA	1
2	23			DC3000A	94959	CARTRIDGE,DATA	EA	1
2	24			12-117739-1	28815	COVER,TOP	EA	1
2	25			12-117700-1	28815	PLATE,SIDE,CARD CAGE	EA	1
2	26		5305-00-056-9961	M524693C4	96906	SCREW,MACHINE: (4-40 X .375L)	EA	6
2	27		5305-00-054-5648	MS51957-14	96906	SCREW,MACHINE: (4-40 X .312L)	EA	8
2	28			12-117718-1	28815	CLAMP,MOTOR	EA	1
2	29		5305-00-054-5656	MS51957-22	96906	SCREW,MACHINE: (4-40X1.250L)	EA	2
2	30			12-117706-1	28815	PLATE,SIDE,CARD CAGE	EA	1
2	31			12-117697-1	28815	PLATE,REAR	EA	1
2	32			12-118576-11	28815	PLATE, IDENTIFICATION	EA	1
2	33			12-117707-1	28815	COVER,BOTTOM	EA	1
2	34			12-122966-2	28815	PLATE,MOUNTING,CONNECTOR	EA	1
2	35		5305-00-054-6652	M5S51957-28	96906	SCREW,MACHINE: (6-32 x .375L)	EA	2
2	36		5310-00-722-5998	M5S15795-805	96906	WASHER,FLAT: (NO. 6)	EA	4
2	37		5310-00-929-6395	MS35338-136	96906	WASHER,LOCK: (SPLIT NO 6)	EA	4
2	38			8217A0632-10A	06540	POST,ELECTRICAL-MECHANICAL EQP	EA	4
2	39		5305-00-066-7326	MS24693C24	96906	SCREW,MACHINE: (6-32 X .250L)	EA	4
2	40			12-11117716-1	28815	BRACKET,ANGLE	EA	2
2	41		5305-00-225-6400	MS24693C3	96906	SCREW,MACHINE: (4-40 X .312L)	EA	4
2	42			12-117699-1	28815	PLATE,SIDE	EA	1
2	43			10648EL11	08719	SWITCH,PUSH	EA	1
2	44		5305-00-054-6651	M551957-27	96906	SCREW,MACHINE: (6-32X0.312L)	EA	2
2	45			12-117708-1	28815	PLATE,FRONT	EA	1
2	46		5305-00-066-7327	MS24693C28	96906	SCREW,MACHINE: (6-32X0.500L)	EA	2
2	47		5305-00-958-2918	MS24693C26	96906	SCREW,MACHINE: (6-32 X .375L)	EA	2

Section IV. REPAIR PARTS LIST - Continued

ILLUSTRATION		SMR CODE	NATIONAL STOCK NUMBER	PART NUMBER	FSCM	DESCRIPTION	U/M	QTY INC IN UNIT
(a) FIG NO.	(b) ITEM NO.							
3				10-118704-1	28815	CONTROL, LOGIC: SEE NHA FIGURE 2		
3	1			12-118703-1	28815	PRINTED WIRING BOARD	EA	1
3	2	5905-00-470-9481		RCROSG202JS	81349	RESISTOR, FIXED, COMPOSITION: (2K, 5PCT, 1/8W)	EA	12
3	3	5305-00-253-5603		MS21318-1	96906	SCREW, DRIVE: (00 X .125L)	EA	2
3	4			93L00DM	34335	MICROCIRCUIT, DIGITAL	EA	1
3	5	5962-00-169-3826		SNS4L74J	01295	MICROCIRCUIT, DIGITAL	EA	5
3	6			12-118576-1	28815	PLATE, IDENTIFICATION	EA	1
3	7			12-117737-1	28815	EJECTOR, CIRCUIT CARD	EA	1
3	8			14007-1P4	91506	PIN, EJECTOR	EA	2
3	9	5962-00-451-5833		SN54L10J	01295	MICROCIRCUIT, DIGITAL	EA	2
3	10	5910-00-113-7672		CK05BX104KL	81349	CAPACITOR, FXD, CER, DIELECTRIC: (0.1UF, 10PCT, 50V)	EA	8
3	11	5962-00-451-5830		SN54L00J	01295	MICROCIRCUIT, DIGITAL	EA	3
3	12	5905-00-617-5089		RCR0SG153JS	81349	RESISTOR, FIXED, COMPOSITION: (15K, 5PCT, 1/8W)	EA	1
3	13	5962-00-451-5831		SN54L04J	01295	MICROCIRCUIT, DIGITAL	EA	2
3	14			CS13C396KL	81349	CAPACITOR, FIXED, ELECTROLYTIC: (39UF, 10PCT, 10V)	EA	1
3	15			1N4148	81349	SEMICONDUCTOR DEVICE, DIODE	EA	1
3	16	5962-00-285-3302		SN54123J	01295	MICROCIRCUIT, DIGITAL	EA	1
3	17	5962-00-036-8724		SN5427J	01295	MICROCIRCUIT, DIGITAL	EA	1
3	18			CS130226KL	81349	CAPACITOR, FIXED, ELECTROLYTIC: (22UF, 10PCT, 15V)	EA	1
3	19	5962-00-510-9232		SN5408J	01295	MICROCIRCUIT, DIGITAL	EA	3
3	20			SN54LS10J	01295	MICROCIRCUIT, DIGITAL	EA	1
3	21	5305-00-054-5639		M551957-5	96906	SCREW, MACHINE: (2-56 X .375L)	EA	1
3	22			16-117616-1	28815	CONNECTOR, RECEPTICAL, ELEC: SEE FIGURE 4	EA	1
3	23	5962-00-714-1791		SN5404J	01295	MICROCIRCUIT, DIGITAL	EA	1
3	24	5905-00-116-2394		RCR0T7G511JS	81349	RESISTOR, FIXED, COMPOSITION: 1510, 5PCT, 1/4W)	EA	1
3	25	5905-00-458-9500		RCR05G102JS	81349	RESISTOR, FIXED, COMPOSITION: (1K, 5PCT, 1/8W)	EA	2
3	26	5961-00-951-8757		2N2222A	81349	TRANSISTOR	EA	2
3	27			119-0103	01295	PAD, TRANSISTOR	EA	2
3	28			93L14DM	34335	MICROCIRCUIT, DIGITAL	EA	1
3	29	5962-00-451-5839		SN54L86J	01295	MICROCIRCUIT, DIGITAL	EA	1
3	30	5905-00-617-5091		RCR05G472JS	81349	RESISTOR, FIXED, COMPOSITION: (4.7K, 5PCT, 1/8W)	EA	1
3	31			C513C475KL	81349	CAPACITOR, FIXED, ELECTROLYTIC: (4.7UF, 10PCT, 10V)	EA	1
3	32	5961-00-556-2091		1N270	81349	SEMICONDUCTOR DEVICE, DIODE	EA	1
3	33	5905-00-403-8837		RCR05G223JS	81349	RESISTOR, FIXED, COMPOSITION: (22K, 5PCT, 1/8W)	EA	1
3	34			12-117738-1	28815	EJECTOR, CIRCUIT CARD	EA	1
3	35	5962-00-451-5836		SN54L73J	01295	MICROCIRCUIT, DIGITAL	EA	2
3	36	5962-00-509-1860		SN5420J	01295	MICROCIRCUIT, DIGITAL	EA	1
3	37	5320-00-243-8357		MS20470AD2-5	96906	RIVET, SOLID: (0.063 X .312L)	EA	2
3	38			NAS671-62	80205	NUT, PLAIN, HEXAGON: (NO 2-56)	EA	1
3	39	5310-00-595-6761		M515795-802	96906	WASHER, FLAT: (NO. 2)	EA	2
3	40	5935-00-851-2451		TP8-8	81312	CONNECTOR, RECEPTICAL, ELEC	EA	1
BULK				MILS22743GRADE C	81349	SEALING COMPOUND: (10/25 IN-LB BLUE)	LB	



Section IV. REPAIR PARTS LIST - Continued

ILLUSTRATION		SMR CODE	NATIONAL STOCK NUMBER	PART NUMBER	FSCM	DESCRIPTION	U/M	QTY INC IN UNIT
(a) FIG NO.	(b) ITEM NO.							
4				16-117616-1	28815	CONNECTOR,RECEPTICAL,ELEC: SEE NHA FIGURE 3		
4				16-117616-2	28815	CONNECTOR,RECEPTICAL,ELEC: SEE NHA FIGURE 5		
4				16-117616-3	28815	CONNECTOR,RECEPTICAL,ELECI SEE NHA FIGURE 6		
4				16-117616-4	28815	CONNECTOR,RECEPTICAL,ELEC: SEE NHA FIGURE 7		
4				16-117616-5	28815	CONNECTOR,RECEPTICAL,ELEC: SEE NHA FIGURE 8		
4				16-117616-6	28815	CONNECTOR,RECEPTICAL,ELEC: SEE NHA FIGURE 9		
4	1		5970-00-355-8018	001-1805-509	31413	PIN,ADAPTER	EA	46
4	2			613-0001-505	31413	EXTRUSION,ADAPTER	EA	1
4	3			536-0012-000	31413	KEY,POLARIZING	EA	2
4	4			001-1802-509	31413	PIN,ADAPTER	EA	46
4	5			304-0001-002	31413	INSULATOR,ADAPTER	EA	92

Section IV. REPAIR PARTS LIST - Continued

ILLUSTRATION		SMR CODE	NATIONAL STOCK NUMBER	PART NUMBER	FSCM	DESCRIPTION	U/M	QTY INC IN UNIT
(a) FIG NO.	(b) ITEM NO.							
5				10-118714-1	28815	READ-WRITE LOGIC: SEE NHA FIGURE 2		
5	1			12-118713-1	28815	PRINTED WIRING BOARD	EA	1
5	2	5905-00-116-2394		RCR0TG511JS	81349	RESISTOR, FIXED, COMPOSITION: (510,5PCT,1/4W)	EA	4
5	3	5305-00-253-5603		MS21318-1	96906	SCREW, DRIVE: (00 X .125L)	EA	2
5	4			12-118576-2	28815	PLATE, IDENTIFICATION	EA	1
5	5			1N751A	81349	SEMICONDUCTOR DEVICE, DIODE	EA	4
5	6			1N758A	81349	SEMICONDUCTOR DEVICE, DIODE	EA	4
5	7	5910-00-113-7672		CK058X104KL	81349	CAPACITOR, FXD, CER, DIELECTRIC: (0.1UF, 10PCT, 50V)	EA	10
5	8			12-117737-2	28815	EJECTOR, CIRCUIT CARD	EA	1
5	9	5905-00-402-7049		RCR05G470JS	81349	RESISTOR, FIXED, COMPOSITION: (47,5PCT, 1/8W)	EA	8
5	10			14007-1P4	91506	PIN, EJECTOR	EA	2
5	11	5905-00-617-5091		RCR05G472JS	81349	RESISTOR, FIXED, COMPOSITION: (4.7K, SPCT, 1/8W)	EA	12
5	12	5910-00-255-3694		CK05BX471KL	81349	CAPACITOR, FXD, CER, DIELECTRIC: (470PF, 10PCT, 200V)	EA	4
5	13			U6A7709312	34335	MICROCIRCUIT, DIGITAL	EA	4
5	14	5905-00-255-3700		RCR05G121JS	81349	RESISTOR, FIXED, COMPOSITION: (120,5PCT, 1/8W)	EA	4
5	15	5910-00-220-3407		CK06BX224KL	81349	CAPACITOR, FXD, CER, DIELECTRIC: (0.22UF, 10PCT, 50V)	EA	4
5	16	5910-00-137-0936		CK05BX472KL	81349	CAPACITOR, FXD, CER, DIELECTRIC: (4700PF, 10PCT, 100V)	EA	8
5	17	5905-00-119-8811		RCR07G151JS	81349	RESISTOR, FIXED, COMPOSITION: (150,5PCT, 1/4W)	EA	4
5	18			DM5CC050D	72136	CAPACITOR, FXD, MICA DIELECTRIC	EA	4
5	19	5910-00-468-3874		CK05BX220KL	81349	CAPACITOR, FXD, CER, DIELECTRIC: (22PF, 10PCT, 200V)	EA	4
5	20	5905-00-484-7550		RCR05G154JS	81349	RESISTOR, FIXED, COMPOSITION: (150K, 5PCT, 1/8W)	EA	4
5	21			CS13E156KL	81349	CAPACITDR, FIXED, ELECTROLYTIC: (15UF, 10PCT, 20V)	EA	2
5	22	5320-03-243-8357		MS20470AD2-5	96906	RIVET, SOLID: (0.063 X .312L)	EA	2
5	23			C513D226KL	81349	CAPACITOP, FIXED, ELECTROLYTIC: (22UF, 10PCT, 15V)	EA	1
5	24	5962-00-339-6427		U7B93L2851X	34335	MICROCIRCUIT, DIGITAL	EA	4
5	25	5962-00-714-1791		SN5434J	01295	MICROCIRCUIT, DIGITAL	EA	3
5	26	5962-00-361-8648		SN5486J	01295	MICROCIRCUIT, DIGITAL	EA	1
5	27			16-117616-2	28815	CONNECTOR, RECEPTICAL, ELEC: SEE FIGURE 4	EA	1
5	28			CS13C475KL	81349	CAPACITOR, FIXED, ELECTROLYTIC: (4.7UF, 10PCT, 10V)	EA	4
5	29	5961-00-951-8757		2N2222A	81349	TRANSISTOR	EA	8
5	30			119-0103	01295	PAD, TRANSISTOR	EA	8
5	31	5905-00-435-1718		RCR07G241JS	81349	RESISTOR, FIXED, COMPOSITION: (240,5PCT, 1/4W)	EA	8
5	32	5905-30-761-5758		RCP05G471JS	81349	RESISTOP, FIXED, COMPOSITION: (470,5PCT, 1/8W)	EA	8
5	33	5905-00-470-9481		RCR05G202JS	81349	RESISTOR, FIXED, COMPOSITION: (2K, 5PCT, 1/8W)	EA	5
5	34	5962-00-510-9232		SN5408J	01295	MICROCIRCUIT, DIGITAL	EA	2
5	35			12-117138-2	28815	EJECTOR, CIRCUIT CARD	EA	1
5	36	5305-30-054-5639		M5S51957-5	96906	SCREW, MACHINE: (2-56 X .375L)	EA	1
5	37			NA5671-62	80205	NUT, PLAIN, HEXAGON: (NO 2-56)	EA	1
5	38	5310-00-595-6761		M515795-802	96906	WASHER, FLAT: (NO. 2)	EA	2
5	39	5935-00-851-2451		TP8-8	81312	CONNECTOR, RECEPTICAL, ELEC	EA	1
5	40	5905-00-111-4845		RCR07G201JS	81349	RESISTOR, FIXED, COMPOSITION: (200,5PCT, 1/4W)	EA	4
5	41	5905-00-433-6483		RCR05G392JS	81349	RESISTOR1FIXED, COMPOSITION: (3.9K, 5PCT, 1/8W)	EA	8
5	42	5961-00-556-2091		1N270	81349	SEMICONDUCTOR DEVICE, DIODE	EA	4
5	43	5905-30-403-8837		RCR05G223JS	81349	RESISTOR, FIXED, COMPOSITION: (22K, 5PCT, 1/8W)	EA	4
5	44			LM1514J	12040	MICROCKT, LINEAR	EA	4
5	45	5910-00-022-5655		CK05BX102KL	81349	CAPACITOR, FXD, CER, DIELECTRIC: (1000PF, 10PCT, 200V)	EA	4
5	46	5910-00-483-4531		CK05BX683KL	81349	CAPACITOR, FXD, CER, DIELECTRIC: (0.01UT, 10PCT, 200V)	EA	4
5	47	5905-00-492-7607		RCR05G103JS	81349	RESISTOR, FIXED, COMPOSITION: (10K, 5PCT, 1/8W)	EA	4
5	48			1N4148	81349	SEMICONDUCTOR DEVICE, DIODE	EA	4

ILLUSTRATION		SMR CODE	NATIONAL STOCK NUMBER	PART NUMBER	FSCM	DESCRIPTION	U/M	QTY INC IN UNIT
(a) FIG NO.	(b) ITEM NO.							
BULK				MILS22743GRADE	81349	SEALING COMPOUND: (10/25 IN-LB BLUE)	LB	

Section IV. REPAIR PARTS LIST - Continued

ILLUSTRATION		SMR CODE	NATIONAL STOCK NUMBER	PART NUMBER	FSCM	DESCRIPTION	U/M	QTY INC IN UNIT
(a) FIG NO.	(b) ITEM NO.							
6				10-118724-1	28815	READ DATA SYNC: SEE NHA FIGURE 2	EA	1
6	1			12-118723-1	28815	PRINTED MIRING BOARD	EA	18
6	2	5905-00-470-9481		RCROSG202JS	81349	RESISTOR, FIXED, COMPOSITION: (2K, 5PCT, 1/8W)	EA	2
6	3	5305-00-253-5603		N521318-1	96906	SCREW, DRIVE: (00 X .125L)	EA	1
6	4			12-118516-3	28815	PLATE, IDENTIFICATION	EA	1
6	5			12-117737-3	28815	EJECTOR, CIRCUIT CARD	EA	2
6	6			14007-1P4	91506	PIN, EJECTOR	EA	6
6	7	5962-00-169-3826		SN54L74J	01295	MICROCIRCUIT, DIGITAL	EA	1
6	8	5962-00-451-5833		SN54L10J	01295	MICROCIRCUIT, DIGITAL	EA	4
6	9	5962-00-171-0055		SN54L193J	01295	MICROCIRCUIT, DIGITAL	EA	5
6	10	5962-00-632-8248		SN54LS74J	01295	MICROCIRCUIT, DIGITAL	EA	10
6	11	5910-00-113-7672		CKOSBXIO4KL	81349	CAPACITOR, FXD, CER, DIELECTRIC: (0.1UF, 10PCT, 50V)	EA	1
6	12	5962-00-509-1860		SN5420J	01295	MICROCIRCUIT, DIGITAL	EA	2
6	13	5962-00-451-5831		SN54LO4J	01295	MICROCIRCUIT, DIGITAL	EA	2
6	14	5962-00-118-6121		SN5473J	01295	MICROCIRCUIT, DIGITAL	EA	2
6	15	5962-00-510-9232		SN5408J	01295	MICROCIRCUIT, DIGITAL	EA	2
6	16			1N759A	81349	SEMICONDUCTOR DEVICE, DIODE	EA	4
6	17			3341DM	07263	MICROCIRCUIT, DIGITAL	EA	1
6	18			CS13D226KL	81349	CAPACITOR, FIXED, ELECTROLYTIC: (22UF, 10PCT, 15V)	EA	2
6	19	5320-00-243-8357		MS20470AD2-5	96906	RIVET, SOLID: (0.063 X .312L)	EA	1
6	20			DM7095D	27014	MICROCIRCUIT, DIGITAL	EA	1
6	21			16-117616-3	28815	CONNECTOR, RECEPTICAL, ELEC: SEE FIGURE 4	EA	1
6	22	5962-00-481-2858		SN5400J	01295	MICROCIRCUIT, DIGITAL	EA	2
6	23	5905-00-136-8405		RCRO7G131JS	81349	RESISTOR, FIXED, COMPOSITION: (130, 5PCT, 1/4W)	EA	1
6	24			CS13E156KL	81349	CAPACITOR, FIXED, ELECTROLYTIC: (15UF, 10PCT, 20V)	EA	1
6	25	5962-00-451-5834		SN54L20J	01295	MICROCIRCUIT, DIGITAL	EA	1
6	26	5905-00-458-9500		RCR05G102JS	81349	RESISTOR, FIXED, COMPOSITION: (1K, 5PCT, 1/8W)	EA	1
6	27	5962-00-451-5830		SN54L00J	01295	MICROCIRCUIT, DIGITAL	EA	1
6	28			12-117730-1	28815	STRAP, RETAINING	EA	3
6	29			NAS671-62	80205	NUT, PLAIN, HEXAGON: (NO 2-56)	EA	6
6	30	5310-00-595-6761		M515795-802	96906	WASHER, FLAT: (NO. 2)	EA	2
6	31			MS51957-3	96906	SCREW, MACHINE: (2-56 X .250L)	EA	2
6	32	5310-00-928-2690		MS35338-134	96906	WASHER, LOCK: (SPLIT NO 2)	EA	1
6	33			CR69U5-12MHZ	81349	CRYSTAL UNIT, QUARTZ: (12 MHZ)	EA	1
6	34			12-117738-3	28815	EJECTOR, CIRCUIT CARD	EA	1
6	35	5962-00-148-4145		MC4324L	04713	MICROCIRCUIT, DIGITAL	EA	1
6	36	5305-00-054-5639		M551957-5	96906	SCREW, MACHINE: (2-56 X .375L)	EA	1
6	37	5962-00-451-5839		SN54L86J	01295	MICROCIRCUIT, DIGITAL	EA	1
6	38	5935-00-851-2451		TP8-8	81312	CONNECTOR, RECEPTICAL, ELEC	EA	1
BULK				CHRCO	71643	TAPE, TEFLON	EA	
BULK				MILS22743GRADE C	81349	SEALING COMPOUND: (10/25 IN-LB BLUE)	LB	

Section IV. REPAIR PARTS LIST - Continued

ILLUSTRATION		SMR CODE	NATIONAL STOCK NUMBER	PART NUMBER	FSCM	DESCRIPTION	U/M	QTY INC IN UNIT
(a) FIG NO.	(b) ITEM NO.							
7				10-118734-1	28815	TAPE NOTION CONTROL: SEE NHA FIGURE 2		
7	1		5305-00-054-5635	MS51957-5	96906	SCREW, MACHINE: (2-56 X .375L)	EA	1
7	2		5310-00-595-6761	MS15795-802	96906	WASHER, FLAT: (NO. 2)	EA	2
7	3			NAS671-62	80205	NUT, PLAIN, HEXAGON: (NO 2-56)	EA	1
7	4		5905-00-235-3534	RCR32G681JS	81349	RESISTOR, FIXED, COMPOSITION: (680,5PCT,1W)	EA	1
7	5		5910-00-113-7672	CK058X104KL	81349	CAPACITOR, FXD, CER, DIELECTRIC: (0.1UF,10PCT,50V)	EA	7
7	6		5961-00-927-5042	2N3740	81349	TRANSISTOR	EA	3
7	7		5961-00-410-5450	43-66-1	13103	PAD, TRANSISTOR	EA	5
7	8		5999-00-136-4054	6166C	13103	HEATSINK	EA	2
7	9		5310-00-934-9748	MS35649-244	96906	NUT, PLAIN, HEXAGON: (4-40)	EA	10
7	10		5310-00-550-5054	MS15795-809	96906	WASHER, FLAT: (1/4)	EA	20
7	11		5310-00-582-9594	MS35335-70	96906	WASHER, LOCK: (1.000 ID EXT TH)	EA	15
7	12		5305-00-054-5650	MS51957-16	96906	SCREW, MACHINE: (4-40 X .438L)	EA	4
7	13		5305-00-054-5649	MS551957-15	96906	SCREW, MACHINE: (4-40 X .375L)	EA	6
7	14		5905-00-148-4477	3250W66-202	32997	RESISTOR, VARIABLE, NONWIREWOUND	EA	1
7	15			RCR07G202JS	81349	RESISTOR, FIXED, COMPOSITION: (2K,5PCT,1/4W)	EA	1
7	16		5305-00-253-5603	MS21318-1	96906	SCREW, DRIVE: (00 X .125L)	EA	2
7	17			12-118576-4	28815	PLATE, IDENTIFICATION	EA	1
7	18		5905-00-116-8569	RCR20821JS	81349	RESISTOR, FIXED, COMPOSITION: (820,5PCT,1/2W)	EA	2
7	19		5905-00-110-7620	RCRO7G102JS	81349	RESISTOR, FIXED, COMPOSITION: (1K,5PCT,1/4W)	EA	3
7	20			RCR05G243JS	81349	RESISTOR, FIXED, COMPOSITION	EA	1
7	21		5905-00-761-5758	RCR05G471JS	81349	RESISTOR, FIXED, COMPOSITION: (470,5PCT,1/8W)	EA	3
7	22		5905-00-407-0089	RCR05G753JS	81349	RESISTOR, FIXED, COMPOSITION: (75K,5PCT,1/8W)	EA	1
7	23			12-117737-4	28815	EJECTOR, CIRCUIT CARD	EA	1
7	24			1N4148	81349	SEMICONDUCTOR DEVICE, DIOOE	EA	13
7	25			2N3766	81349	TRANSISTOR	EA	2
7	26			CS13F226KL	81349	CAPACITOR, FIXED, ELECTROLYTIC: (22UF,10PCT,15V)	EA	2
7	27		5905-00-403-8837	RCR05G223JS	81349	RESISTOR, FIXED, COMPOSITION: (22K,5PCT,1/8W)	EA	3
7	28		5905-00-492-7607	RCR05G103JS	81349	RESISTOR, FIXED, COMPOSITION: (10K,5PCT,1/8W)	EA	7
7	29		5962-00-434-1006	U6W7747312	34335	NICROCKT, LINEAR	EA	4
7	30		5905-00-401-7427	RCR05G332JS	81349	RESISTOR, FIXED, COMPOSITION: (3.3K.SPCT,1/8W)	EA	2
7	31		5961-00-951-8757	2N2222A	81349	TRANSISTOR	EA	7
7	32		5905-00-470-9481	RCR05G202JS	81349	RESISTOR, FIXED, COMPOSITION: (2K,5PCT,1/8W)	EA	5
7	33		5961-00-556-2091	1N270	81349	SEMICONDUCTOR DEVICE, DIODE	EA	1
7	34		5961-00-925-3777	2N2907A	81349	TRANSISTOR	EA	3
7	35		5905-00-141-0593	RCR20G182JS	81349	RESISTOR, FIXED, COMPOSITION: (1.8K,5PCT,1/2W)	EA	1
7	36			1N3189	81349	SEMICONDUCTOR DEVICE, DIODE	EA	1
7	37		5910-00-022-5655	CK050BX102KL	81349	CAPACITOR, FXD, CER, DIELECTRIC: (1000PF,10PCT,200V)	EA	2
7	38		5905-00-125-0897	RCR20G1R2JS	81349	RESISTOR, FIXED, COMPOSITION: (1.2,5PCT,1/2W)	EA	2
7	39		5910-00-220-3407	CK068X224KL	81349	CAPACITOR, FXD, CER, DIELECTRIC: (0.22UF,10PCT,50V)	EA	1
7	40			CS13E156KL	81349	CAPACITOR, FIXED, ELECTROLYTIC: (15UF,10PCT,20V)	EA	2
7	41		5905-00-141-1183	RCR07G101JS	81349	RESISTOR, FIXED, COMPOSITION: (100,5PCT,1/4W)	EA	2
7	42		5910-00-103-7748	CK06BX105KL	81349	CAPACITOR, FXD, CER, DIELECTRIC: (1UF,10PCT,50V)	EA	2
7	43			843V15	80740	MICROCKT, LINEAR	EA	1
7	44		5935-00-851-2451	TP8-8	81312	CONNECTOR, RECEPTICAL, ELEC	EA	1
7	45		5905-00-617-5091	RCR05G472JS	81349	RESISTOR, FIXED, COMPOSITION: (4.7K,5PCT,1/8W)	EA	5
7	46		5905-00-433-6483	RCRO5G392JS	81349	RESISTOR, FIXED, COMPOSITION: (3.9K,5PCT,1/8W)	EA	1
7	47		5905-00-119-8768	RCRO7G82IJS	81349	RESISTOR, FIXED, COMPOSITION: (1820,5PCT,1/4W)	EA	1
7	48		5910-00-113-7671	CK05BX473KL	81349	CAPACITOR, FXD, CER, DIELECTRIC: (0.047UF,10PCT,50V)	EA	5

Section IV. REPAIR PARTS LIST - Continued

ILLUSTRATION		SMR CODE	NATIONAL STOCK NUMBER	PART NUMBER	FSCM	DESCRIPTION	U/M	QTY INC IN UNIT
(a) FIG NO.	(b) ITEM NO.							
7	49		5905-00-484-7550	RCR05G154JS	81349	RESISTOR, FIXED, COMPOSITION: 150K, 5PCT, 1/8W)	EA	6
7	50		5905-00-106-9344	RCR20G101JS	81349	RESISTOR, FIXED, COMPOSITION: (100, 5PCT, 1/2W)	EA	1
7	51		5905-00-106-3668	RCR07G220JS	81349	RESISTOR, FIXED, COMPOSITION: (22, 5PCT, 1/4W)	EA	2
7	52			CS13D226KL	81349	CAPACITOR, FIXED, ELECTROLYTIC: (22UF, 10PCT, 15V)	EA	1
7	53		5320-00-243-8357	MS20470AD2-5	96906	RIVET, SOLID: 10.063 X .312L)	EA	2
7	54		5905-00-135-6046	RCR07G681JS	81349	RESISTOR, FIXED, COMPOSITION: (680, 5PCT, 1/4W)	EA	1
7	55		5962-00-481-2858	SN5400J	01295	MICROCIRCUIT, DIGITAL	EA	1
7	56			16-117616-4	28815	CONNECTOR, RECEPTICAL, ELEC: SEE FIGURE 4	EA	1
7	57			12-118733-1	28815	PRINTED WIRING BOARD	EA	1
7	58		5905-00-114-5388	RCR20G220JS	81349	RESISTOR, FIXED, COMPOSITION: (22, 5PCT, 1/2W)	EA	1
7	59		5905-00-470-9482	RCR0SG274JS	81349	RESISTOR, FIXED, COMPOSITION: (270K, 5PCT, 1/8W)	EA	1
7	60		5905-00-180-8303	RCR0SG152JS	81349	RESISTOR, FIXED, COMPOSITION: (1.5K, 5PCT, 1/8W)	EA	1
7	61		5905-00-617-5093	RCR0SG473JS	81349	RESISTOR, FIXED, COMPOSITION: (47K, 5PCT, 1/8W)	EA	1
7	62			IN4614	81349	IN4614	EA	1
7	63		5999-00-107-0628	7717-16N	13103	PAD, TRANSISTOR	EA	10
7	64			119-0102	01295	PAD, TRANSISTOR	EA	1
BULK				CHRCO	71643	TAPE, TEFLON	EA	
BULK			6850-00-927-9461	MILS22743GRADE C	81349	SEALING COMPOUND: (10/25 IN-LB BLUE)	LB	
BULK				340	71984	SILICONE COMPOUND	EA	

Section IV. REPAIR PARTS LIST - Continued

ILLUSTRATION		SMR CODE	NATIONAL STOCK NUMBER	PART NUMBER	FSCM	DESCRIPTION	U/M	QTY INC IN UNIT
(a) FIG NO.	(b) ITEM NO.							
8				10-118744-1	28815	READER,INTERFACE: SEE NHA FIGURE 2		
8	1			12-117738-5	28815	EJECTOR,CIRCUIT CARD	EA	1
8	2		5962-03-321-8117	SN54175J	01295	MICROCIRCUIT,DIGITAL	EA	6
8	3		5962-00-169-3826	SN54L74J	01295	MICROCIRCUIT,DIGITAL	EA	2
8	4			93L09DM	34335	MICROCIRCUIT,DIGITAL	EA	2
8	5		5962-00-451-5831	SN54L04J	01295	MICROCIRCUIT,DIGITAL	EA	1
8	6		5935-00-851-2451	TP8-8	81312	CONNECTOR,RECEPTICAL,ELEC	EA	1
8	7		5305-00-054-5639	MS51957-5	96906	SCREW,MACHINE: (2-56 X .375L)	EA	1
8	8			NAS671-62	80205	NUT,PLAIN,HEXAGON: (NO 2-56)	EA	1
8	9		5310-00-595-6761	MS15795-802	96906	WASHER,FLAT: (NO. 2)	EA	2
8	10		5905-00-443-8983	898-1R2K	80740	RESISTOR NETWORK	EA	1
8	11		5962-00-481-2858	SN5400J	01295	MICROCIRCUIT, DIGITAL	EA	1
8	12		5305-00-253-5603	MS21318-1	96906	SCREW,DRIVE: (00 X .125L)	EA	2
8	13		5962-30-247-3396	SN5474J	01295	MICROCIRCUIT,DIGITAL	EA	1
8	14		5962-0J-451-5835	SN54L33J	01295	MICROCIRCUIT,DIGITAL	EA	2
8	15			12-118576-5	28815	PLATE, IDENTIFICATION	EA	1
8	16		5962-00-510-9232	SN5408J	01295	MICROCIRCUIT,DIGITAL	EA	2
8	17		5962-00-714-1791	SN5404J	01295	MICROCIRCUIT,ODIGITAL	EA	2
8	18			12-117737-5	28815	EJECTOR,CIRCUIT CARD	EA	1
8	19		5910-00-022-2760	CK06BX1004KL	81349	CAPACITOR,FXD,CER,DIELECTRIC: (0.1UF,10PCT,100V)	EA	8
8	20		5962-00-452-0969	SN54L93J	01295	MICROCIRCUIT,DIGITAL	EA	1
8	21		5962-00-933-9735	SN5432J	01295	MICROCIRCUIT,DIGITAL	EA	1
8	22			CS13D226KL	81349	CAPACITOR,FIXED,ELECTROLYTIC: (22UF,10PCT,15V)	EA	2
8	23		5962-00-378-0216	SN5438J	01295	MICROCIRCUIT,DIGITAL	EA	4
8	24		5320-00-243-8357	MS520473AD2-5	96906	RIVET,SOLID: (0.063 X .312L)	EA	2
8	25		5962-00-429-6121	SN54L95J	01295	MICROCIRCUIT,DIGITAL	EA	4
8	26		5962-00-325-3793	U7893L2251X	34335	MICROCIRCUIT,DIGITAL	EA	1
8	27			16-117616-5	28815	CONNECTOR,RECEPTICAL,ELEC: SEE FIGURE 4	EA	1
8	28		5962-00-361-8648	SN5486J	01295	MICROCIRCUIT,DIGITAL	EA	1
8	29		5962-00-451-5836	SN54L73J	01295	MICROCIRCUIT,DIGITAL	EA	1
8	30			12-118743-2	28815	PRINTED WIRING BOARD	EA	1
8	31			14007-1P4	91536	PIN,EJECTOR	EA	2
BULK				MILS22743GRADE C	81349	SEALING COMPOUND: (10/25 IN-LB BLUE)	LB	

Section IV. REPAIR PARTS LIST - Continued

ILLUSTRATION		SMR CODE	NATIONAL STOCK NUMBER	PART NUMBER	FSCM	DESCRIPTION	U/M	QTY INC IN UNIT
(a) FIG NO.	(b) ITEM NO.							
9				10-118754-1	28815	CIRCUIT CARO ASSEMBLY: SEE NHA FIGURE 2		
9	1			12-118743-1	28815	PRINTED WIRING BOARD	EA	1
9	2		5305-00-253-5603	NS21318-1	96906	SCREW,DRIVE: (00 X .125L)	EA	2
9	3			12-117737-6	28815	EJECTOR,CIRCUIT CARD	EA	1
9	4			12-118576-6	28815	PLATE,IDENTIFICATION	EA	1
9	5		5962-00-169-3826	SN54L74J	01295	MICROCIRCUIT,DIGITAL	EA	3
9	6		5962-00-546-1735	SN54107J	01295	MICROCIRCUIT,DIGITAL	EA	2
9	7		5910-00-022-2760	CK06BX104KL	81349	CAPACITOR,FXO,CER,DIELECTRIC: (0.1UF,10PCT,100V)	EA	8
9	8		5962-00-429-6121	SN54L95J	01295	MICROCIRCUIT,DIGITAL	EA	8
9	9		5962-00-325-3793	U7B93L2251X	34335	MICROCIRCUIT,DIGITAL	EA	2
9	10		5962-00-451-5830	SN54L00J	01295	MICROCIRCUIT,DIGITAL	EA	2
9	11		5962-00-451-5837	SN54L78J	01295	MICROCIRCUIT,DIGITAL	EA	2
9	12		5962-00-451-5831	SN54L04J	01295	MICROCIRCUIT,DIGITAL	EA	3
9	13		5962-00-451-5836	SN54L73J	01295	MICROCIRCUIT,DIGITAL	EA	1
9	14		5962-00-378-0216	SN5438J	01295	MICROCIRCUIT,DIGITAL	EA	1
9	15			C513D226KL	81349	CAPACITOR,FIXED,ELECTROLYTIC: (22UF,10PCT,15V)	EA	2
9	16		5962-00-284-3475	U7B93L2451X	34335	MICROCIRCUIT,DIGITAL	EA	2
9	17		5320-00-243-8357	M520470AD2-5	96906	RIVET,SOLIO: (10.063 X .312L)	EA	2
9	18			16-117616-6	28815	CONNECTOR, RECEPTICAL,ELEC: SEE FIGURE 4	EA	1
9	19			SN54L98J	01295	MICROCIRCUIT,DIGITAL	EA	2
9	20		5962-00-714-1791	SN5404J	01295	MICROCIRCUIT,DIGITAL	EA	1
9	21		5962-00-510-9232	SN5408J	01295	MICROCIRCUIT,DIGITAL	EA	1
9	22		5905-00-443-8983	898-1R2K	80740	RESISTOR NETWORK	EA	1
9	23		5962-00-451-5833	SN54L10J	01295	MICROCIRCUIT,DIGITAL	EA	1
9	24			12-117738-6	28815	EJECTOR,CIRCUIT CARD	EA	1
9	25		5935-00-851-2451	TP8-8	81312	CONNECTOR,RECEPTICAL,ELEC	EA	1
9	26		5305-00-054-5639	MS51957-5	96906	SCREW,MACHINE: (2-56 X .375L)	EA	1
9	27		5310-00-595-6761	M5S15795-802	96906	WASHER,FLAT: (NO. 21	EA	2
9	28			NAS671-62	80205	NUT,PLAIN,HEXAGON: (NO 2-561	EA	1
BULK				MILS22743GRAOEC	B1349	SEALING COMPOUND: (10/25 IN-LB BLUE)	LB	



Section IV. REPAIR PARTS LIST - Continued

ILLUSTRATION		SMR CODE	NATIONAL STOCK NUMBER	PART NUMBER	FSCM	DESCRIPTION	U/M	QTY INC IN UNIT
(a) FIG NO.	(b) ITEM NO.							
10				10-118580-3	28815	WIRING HARNESS: SEE NHA FIGURE 2		
10	1			10-100	31413	CONNECTOR,PLUG,ELECTRICAL: SEE FIGURE 11	EA	1
10	2		5999-00-335-8486	MS27508E22A1S	96906	CONNECTOR,RECEPTICAL,ELEC: (10 CONTACTS)	EA	1
10	3			001-6500-502	31413	CONTACT,ELECTRICAL	EA	60
BULK			5970-00-001-9359	EXE28-7-36-09	81349	WIRE,ELECTRICAL: (INSUL 28AWG BLK-WHT	RL	
BULK				MILT43435	81349	TAPE,LACING: (BLACK SIZE 5)	RL	

Section IV. REPAIR PARTS LIST - Continued

ILLUSTRATION		SMR CODE	NATIONAL STOCK NUMBER	PART NUMBER	FSCM	DESCRIPTION	U/M	QTY INC IN UNIT
(a) FIG NO.	(b) ITEM NO.							
11				10-100	31413	CONNECTOR,PLUG,ELECTRICAL: SEE NHA FIGURE 12		
11	1			800-0158-000	31413	SCREW,MACHINE	EA	1
11	2			545-0000-000	31413	KNOB	FA	1
11	3			525-2000-000	31413	COVFF,ELECTRICAL CONNECTOR	EA	1
11	4			800-0156-000	31413	SCREW,MACHINE	EA	2
11	5			522-0000-000	31413	CLAMP,CABLE	EA	1
11	6			313-0000-000	31413	INSULATOR,PLATF	EA	1
11	7			800-0157-000	31413	SCREW,MACHINE	EA	2
11	8			599-0000-000	31413	INSERT,SCREW THREAD	EA	2
11	9			516-0027-000	31413	NUT,SELFLOCKING,-OUNO	EA	1
11	10			800-0155-000	31413	WASHER,LOCK	EA	1
11	11			800-0161-000	31413	WASHER,FLAT	EA	2
11	12			001-6500-513	31413	CONTACT,ELECTRICAL: SEE FIGURE	EA	
11	13			512-0000-000	31413	BOLT,MACHINE	EA	1
BULK				010-2500-501	31413	CONTACT,ELECTRICAL	EA	
BULK				010-2501-501	31413	CONTACT,ELECTRICAL	EA	
BULK				010-2502-501	31413	CONTACT,ELECTRICAL	EA	
BULK				010-2503-501	31413	CONTACT, ELECTRICAL	EA	
BULK				010-2509-501	31413	CONTACT,ELECTRICAL	EA	
BULK				010-2510-501	31413	CONTACT,ELECTRICAL	EA	
BULK				302-0002-002	31413	INSULATOR,FEED THRU	EA	
BULK				516-0002-505	31413	BUSHING,GROUND	EA	
BULK				544-0003-000	31413	KEY,POLARIZING	EA	
BULK				544-0204-J00	31413	KEY,POLARIZING	EA	
BULK				544-0005-000	31413	KEY,POLARIZING	EA	

Section IV. REPAIR PARTS LIST - Continued

ILLUSTRATION		SMR CODE	NATIONAL STOCK NUMBER	PART NUMBER	FSCM	DESCRIPTION	U/M	QTY INC IN UNIT
(a) FIG NO.	(b) ITEM NO.							
12				10-117719-1	28815	TRANSPORT,MAGNETIC TAPE: SEE NHA FIGURE 2		
12	1		5305-00-225-6400	MS24693C3	96906	SCREW,MACHINE: (4-40 X .312L)	EA	1
12	2		5310-00-058-3599	MS35335-57	96906	WASHER,LOCK: (NO 4 EXT TOOTH)	EA	1
12	3		5310-00-933-8118	MS35338-135	96906	WASHER,LOCK: (SPLIT NO 4)	EA	1
12	4			NAS671-64	80205	NUT,PLAIN,HEXAGON: (4-40)	EA	1
12	5			2185-1-8	83330	GROMMET,RUBBER	EA	1
12	6			I0-100	31413	CONNECTOR,PLUG,ELECTRICAL: SEE FIGURE 11	EA	2
12	7		5999-00-335-8486	001-6500-502	31413	CONTACT,ELECTRICAL	EA	40
12	8		5305-00-245-4708	6234SS0440	06540	FASTENER,TURN LOCK	EA	2
12	9			5710-17-20	28815	WASHER,FLAT	EA	2
12	10			CLN1-4	14000	CLAMP,CABLE	EA	1
12	11		5305-00-054-6656	MS51957-32	96906	SCREW,MACHINE: (6-32X0.753L)	EA	1
12	12		5310-00-655-9401	04-140	95987	WASHER,SADDLE	EA	1
12	13		5310-00-929-6395	MS35338-136	96906	WASHER,LOCK: (SPLIT NO 6)	EA	1
12	14			NAS671-66	80205	NUT,PLAIN,HEXAGON: (NO 6-32)	EA	1
12	15			16-117720-1	28815	TRANSPORT,MAGNETIC TAPE	EA	1
12	16		5935-00-838-3835	MS3116FB-3P	96906	CONNECTOR,PLUG,ELECTRICAL: (3 CONTACTS)	EA	1
12	17			ASL3-4	34159	T.AG,CABLE	EA	1
12	18			M39029-1-16-20	81349	CONTACT,SWITCH: (SIZE 16 CRIMP PIN)	EA	4
12	19		5940-00-156-7344	1416-6	83330	TERMINAL,LUG	EA	3
12	20			SST2-SNM	06383	TIE,CABLE	EA	1
12	21			TA1S6M	06383	BASE,CLAMP	EA	2

Section IV. REPAIR PARTS LIST - Continued

ILLUSTRATION		SMR CODE	NATIONAL STOCK NUMBER	PART NUMBER	FSCM	DESCRIPTION	U/M	QTY INC IN UNIT
(a) FIG NO.	(b) ITEM NO.							
BULK				EXE20-19-32-0	81349	WIRE,ELECTRICAL: (INSUL 20AWG BLK)	RL	
BULK				EXE20-19-32-2	81349	WIRE,ELECTRICAL: (INSUL 20AWG RED)	RL	
BULK				EXE20-19-32-5	81349	WIRE,ELECTRICAL: (INSUL 20AWG GREEN)	RL	
BULK				EXE20-19-36-91	81349	WIRE,ELECTRICAL: (INSUL 20AWG WHT-BRN)	RL	
BULK				EXE24-19-36-0	81349	WIRE,ELECTRICAL: (INSUL 24AWG BLK)	RL	
BULK				EXE24-19-36-5	81349	WIRE,ELECTRICAL: (INSUL 24AWG GRN)	RL	
BULK				EXE24-19-36-6	81349	WIRE,ELECTRICAL: (INSUL 24AWG BLUE)	RL	
BULK				EXE24-19-36-90	81349	WIRE,ELECTRICAL: (INSUL 24AWG WHT-BLK)	RL	
BULK				EXE24-19-36-902	81349	WIRE,ELECTRICAL: (24AWG WHT-BLK-RED)	RL	
BULK				EXE24-19-36-903	81349	WIRE,ELECTRICAL: (24AWG WHT-BLK-ORN)	RL	
BULK				EXE24-19-36-904	81349	WIRE,ELECTRICAL: (24AWG WHT-BLK-YEL)	RL	
BULK				EXE24-19-36-905	81349	WIRE,ELECTRICAL: (24AWG WHT-BLK-GRN)	RL	
BULK				EXE24-19-36-906	81349	WIRE,ELECTRICAL: (24AWG WHT-BLK-BLUE)	RL	
BULK				EXE24-19-36-92	81349	WIRE,ELECTRICAL: (INSUL 24AWG WHT-RED)	RL	
BULK				EXE24-19-36-93	81349	WIRE,ELECTRICAL: (INSUL 24AWG WHT-ORN)	RL	
BULK				EXE24-19-36-94	81349	WIRE,ELECTRICAL: (INSUL 24AWG WHT-YEL)	RL	
BULK				EXE24-19-36-95	81349	WIRE,ELECTRICAL: (INSUL 24AWG WHT-GRN)	RL	
BULK				EXE24-19-36-96	81349	WIRE,ELECTRICAL: (INSUL 24AWG WHT-BLU)	RL	
BULK				EXE24-19-36-97	81349	WIRE,ELECTRICAL: (INSUL 24AWG WHT-VIO)	RL	
BULK				EXE24-19-36-98	81349	WIRE,ELECTRICAL: (INSUL 24AWG WHT-GRY)	RL	
BULK				MILT43433	81349	TAPE,LACING	EA	
BULK				PVC1-4	29005	INSULATION SLEEVING,ELECTRICAL	EA	
BULK				PVC1-8	29005	INSULATION SLEEVING,ELECTRICAL	EA	
BULK			3439-00-752-8728	QQS571SN60WRAP3	81348	SOLDER,LEAD-TIN ALLOY	LB	
BULK			5325-00-926-1394	1544	75297	FLUX,SOLDERING	LB	
BULK			5970-00-767-0551	WG301	95987	GROMMET,PLASTIC	EA	
BULK			6850-00-927-9461	SCL1-8	06090	INSULATION SLEEVING,ELECTRICAL	EA	
BULK				340	71984	SILICONE COMPOUND	EA	

Section IV. REPAIR PARTS LIST - Continued

ILLUSTRATION		SMR CODE	NATIONAL STOCK NUMBER	PART NUMBER	FSCM	DESCRIPTION	U/M	QTY INC IN UNIT
(a) FIG NO.	(b) ITEM NO.							
13				0423-1-4250-1	15942	CABLE ASSY,SP,ELECTRICAL: SEE NHA FIGURE 1		
13	1			WTW12112	59730	BAND,MARKER	EA	5
13	2			MS27508E22A2S	96906	CONNECTOR,RECEPTICAL,ELEC: (65 SKT)	EA	2
13	3		5935-00-491-8750	NS27508E20A2S	96906	CONNECTOR,RECEPTICAL,ELEC: (65 SKT)	EA	2
13	4			MS27473E22A1P	96906	CONNECTOR,PLUG,ELECTRICAL: (100 PIN)	EA	1
13	5			WTW2112	59730	BAND,MARKER	EA	1
BULK				MILW16878-4-24AW	81349	WIRE,ELECTRICAL: (INS,AWG24.RED)	RL	
BULK				QQS571SN60WRAP3	81348	SOLDER,LEAD-TIN ALLOY	LB	
BULK			3439-00-752-8728	16-119808-1	28815	WIRE,ELECTRICAL	EA	
BULK			5970-00-001-9359	1544	75297	FLUX,SOLDERING	LB	
BULK				MILT43435	81349	TAPE,LACING: (BLACK SIZE 5)	PL	

Section IV. REPAIR PARTS LIST - Continued

ILLUSTRATION		SMR CODE	NATIONAL STOCK NUMBER	PART NUMBER	FSCM	DESCRIPTION	U/M	QTY INC IN UNIT
(a) FIG NO.	(b) ITEM NO.							
14				0423-1-3158-1	15942	CABLE ASSY,SP,ELECTRICAL: SEE NHA FIGURE 1		
14	1			WTW2112	59730	BAND,MARKER	EA	2
14	2		5940-00-231-4430	32562	00779	TERMINAL,LUG	EA	3
14	3		5935-00-726-6519	MS3126F10-6P	96906	CONNECTOR,PLUG,ELECTRICAL: (6 CONTACTS)	EA	1
BULK				MILW16878-4-20AW	81349	WIRE,ELECTRICAL: (INS,AWG20,BLK)	RL	
BULK				QQS571SN60WRAP3	81348	SOLDER,LEAD-TIN ALLOY	LB	
BULK			3439-00-752-8728	1544	75297	FLUX,SOLDERING	LB	
BULK			5970-00-001-9359	MILT43435	81349	TAPE,LACING: (BLACK SIZE 5)	RL	

Section IV. REPAIR PARTS LIST - Continued

ILLUSTRATION		SMR CODE	NATIONAL STOCK NUMBER	PART NUMBER	FSCM	DESCRIPTION	U/M	QTY INC IN UNIT
(a) FIG NO.	(b) ITEM NO.							
15				0423-1-3166-1	15942	CABLE ASSY,SP,ELECTRICAL: SEE NHA FIGURE 1		
15	1			WTW2112	59730	BAND, MARKER	EA	2
15	2		5940-00-231-4430	32562	00779	TERMINAL,LUG	EA	5
15	3			51862	00779	TERTINAL,LUG	EA	4
15	4		5935-00-762-1495	MS3116F12-10S	96906	CONNECTOR,PLUG,ELECTRICAL: (10 CONTACTS)	EA	1
BULK				MILW16878-4-20AW	81349	WIRE,ELECTRICAL: (INS,AWG20.GRA)	RL	
BULK				QQS571SN60WRAP3	81348	SOLOER,LEAD-TIN ALLOY	LB	
BULK			3439-00-752-8728	1544	75297	FLUX,SOLDERING	LB	
BULK			5970-00-301-9359	MILT43435	81349	TAPE,LACING: (BLACK SIZE 5)	RL	

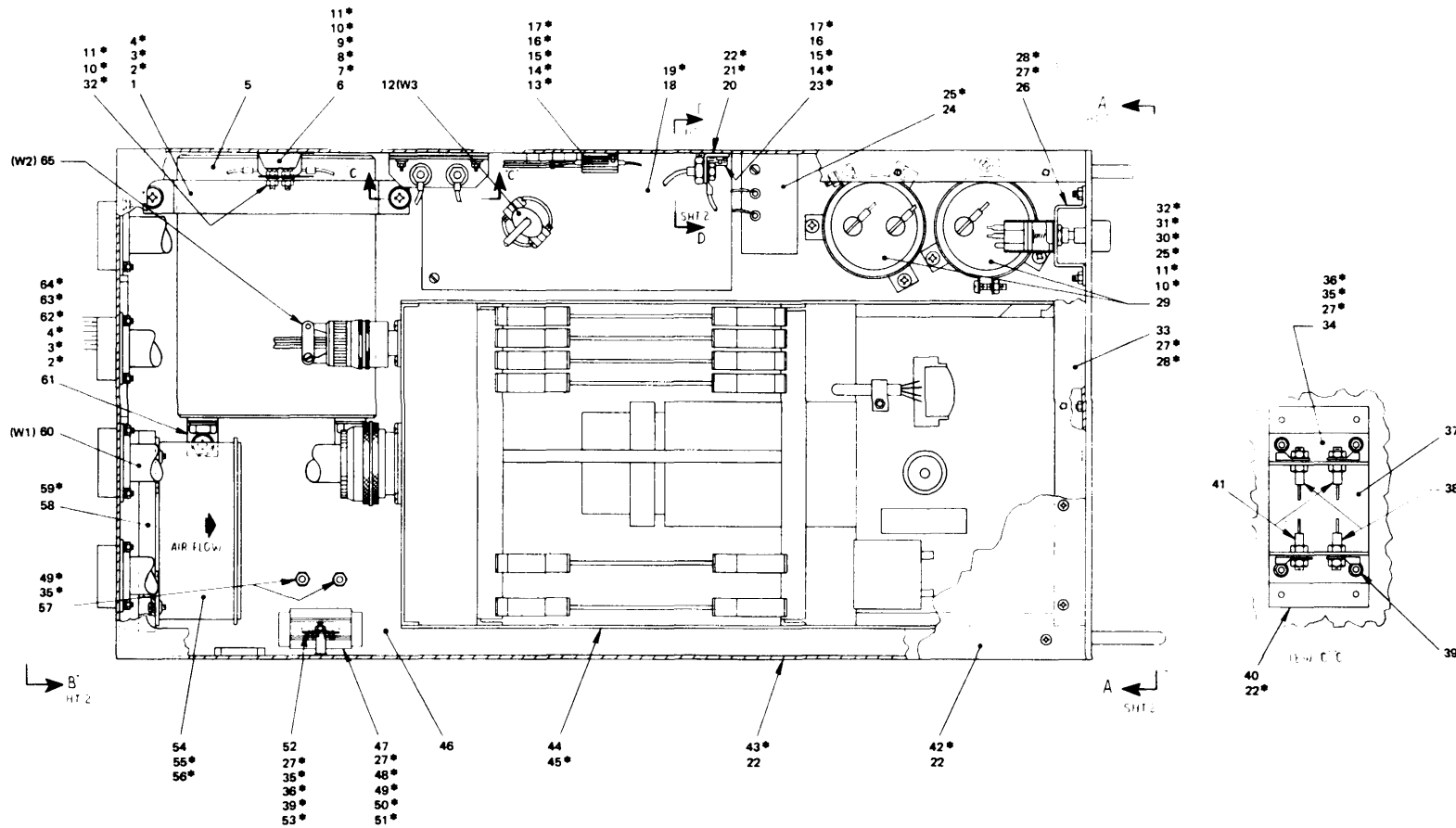
Section IV. REPAIR PARTS LIST - Continued

ILLUSTRATION		SMR CODE	NATIONAL STOCK NUMBER	PART NUMBER	FSCM	DESCRIPTION	U/M	QTY INC IN UNIT
(a) FIG NO.	(b) ITEM NO.							
16				0423-1-3167-1	15942	CABLE ASSY,SP,ELECTRICAL: SEE NHA FIGURE 1		
16	1			WTW2112	59730	BANO,DARKER	EA	2
16	2			51862	00779	TERMINAL,LUG	EA	1
16	3			MS2750BE12A8S	96906	CONNECTOR,RECEPTICAL,ELEC: (8 SKT)	EA	1
BULK			3439-00-752-8728	MILW16878-4-20AW	81349	WIRE,ELECTRICAL: (INS,AWG20,GRA)	RL	
BULK			5970-00-001-9359	QQS571SN60WRAP3	81348	SOLDER,LEAD-TIN ALLOY	LB	
BULK			5970-00-001-9359	1544	75297	FLUX,SOLDERING	LB	
BULK			5970-00-001-9359	MILT43435	81349	TAPE,LACING: (BLACK SIZE 5)	RL	
BULK			5970-00-001-9359	9999999999999999	81349	TAPE,LACING: (BLACK SIZE 5)	RL	

29/(30 blank)



NOTE: ASTERISK ITEMS NOT SHOWN

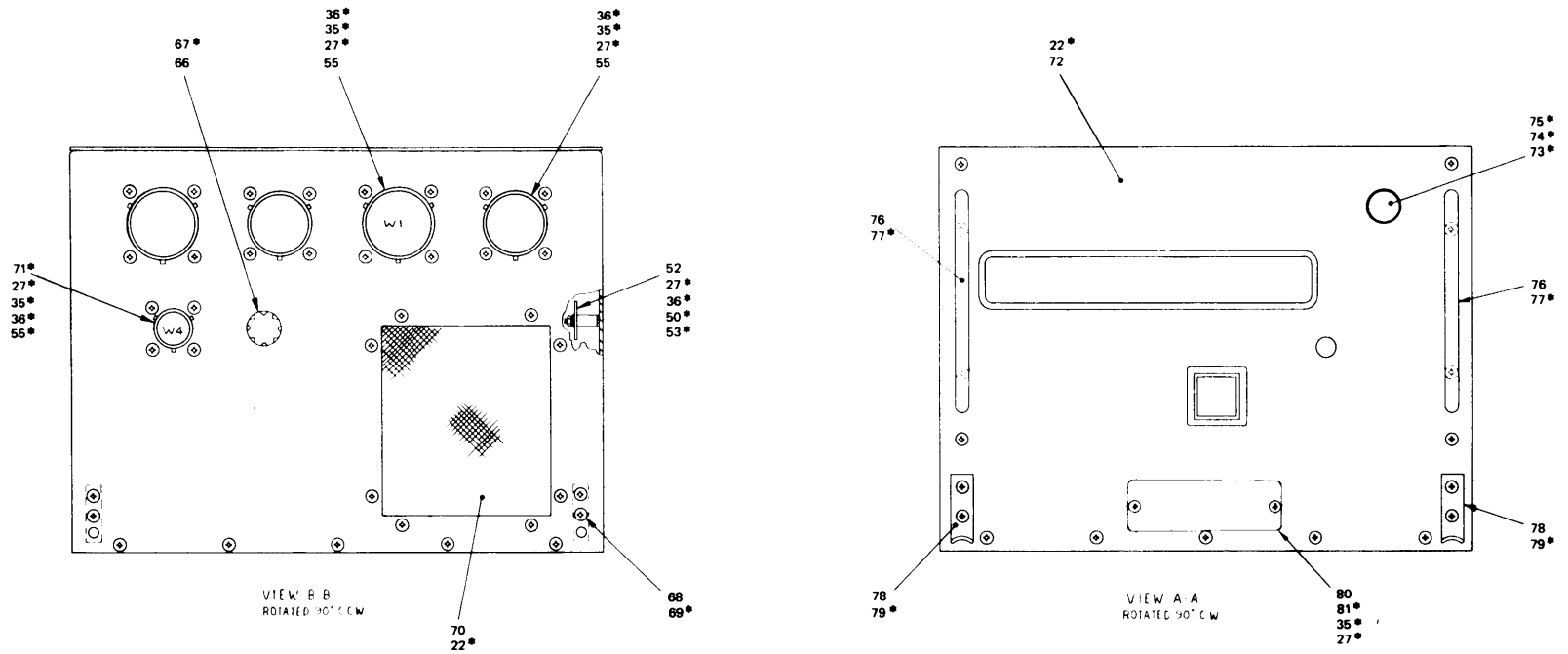


0423-1-4231-1

Figure 1. Recorder-reproducer RD-413/ARD-22 (Sheet 1 of 2)

31/(32 blank)

NOTE : ASTERISK ITEMS NOT SHOWN



0423-1-4231-1

Figure 1. Recorder-Reproducer  
R/D-413/ARD-22 (Sheet 2 of 2)

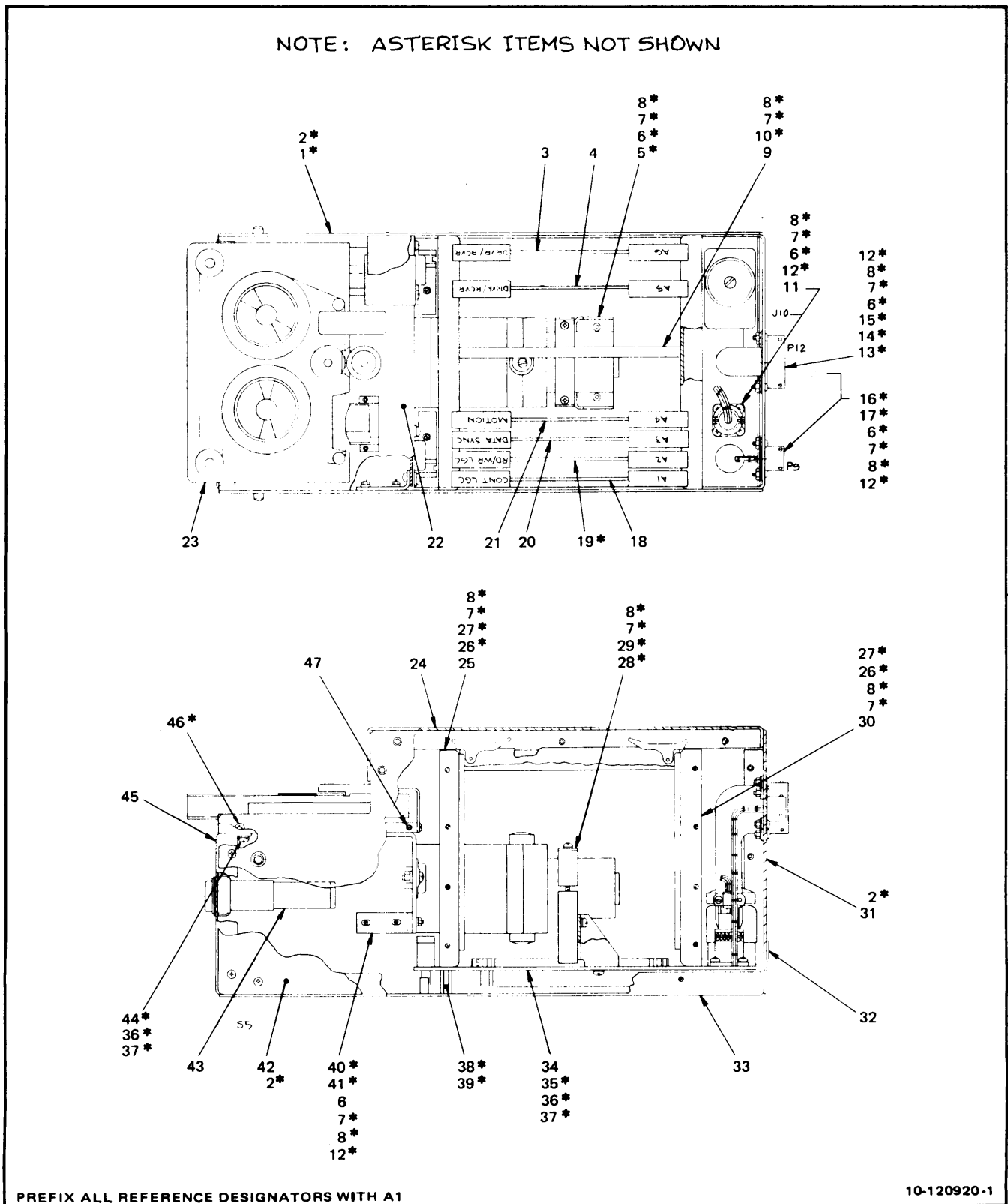
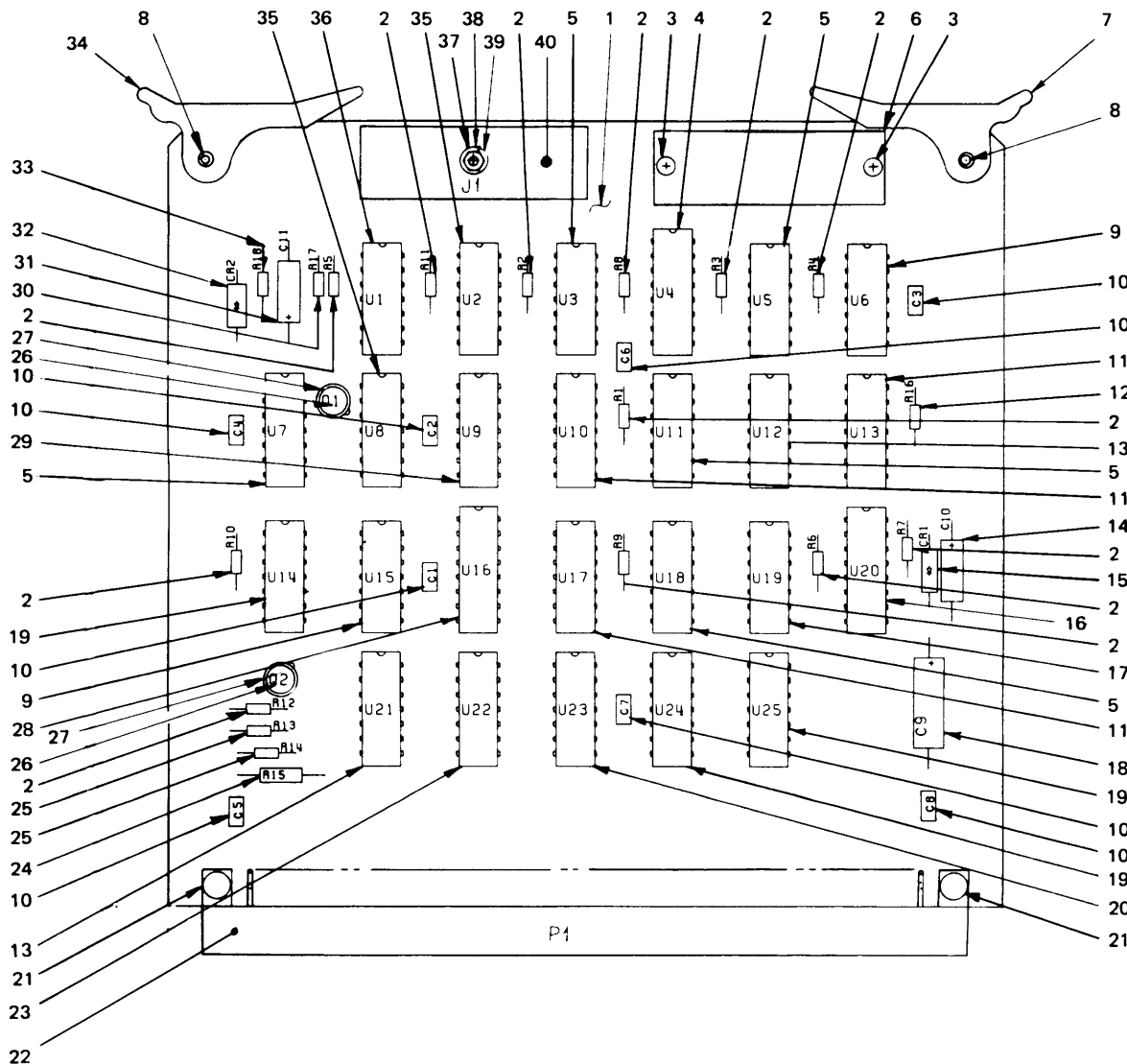


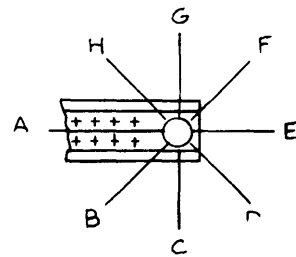
Figure 2. Magnetic Cartridge Unit A1



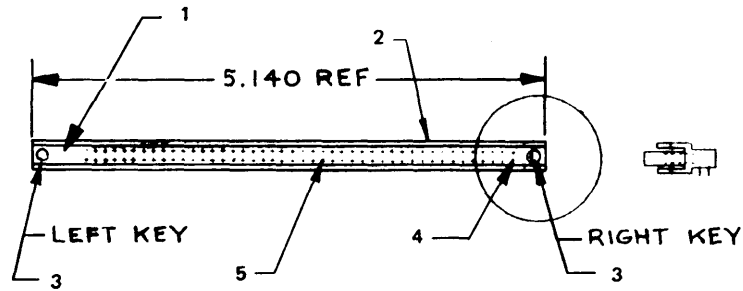
PREFIX ALL REFERENCE DESIGNATORS WITH A1A1

10-118704-1

Figure 3. Logic Control CCA A1A1



KEYING POSITION SHOWN WITH FLAT AT "A"

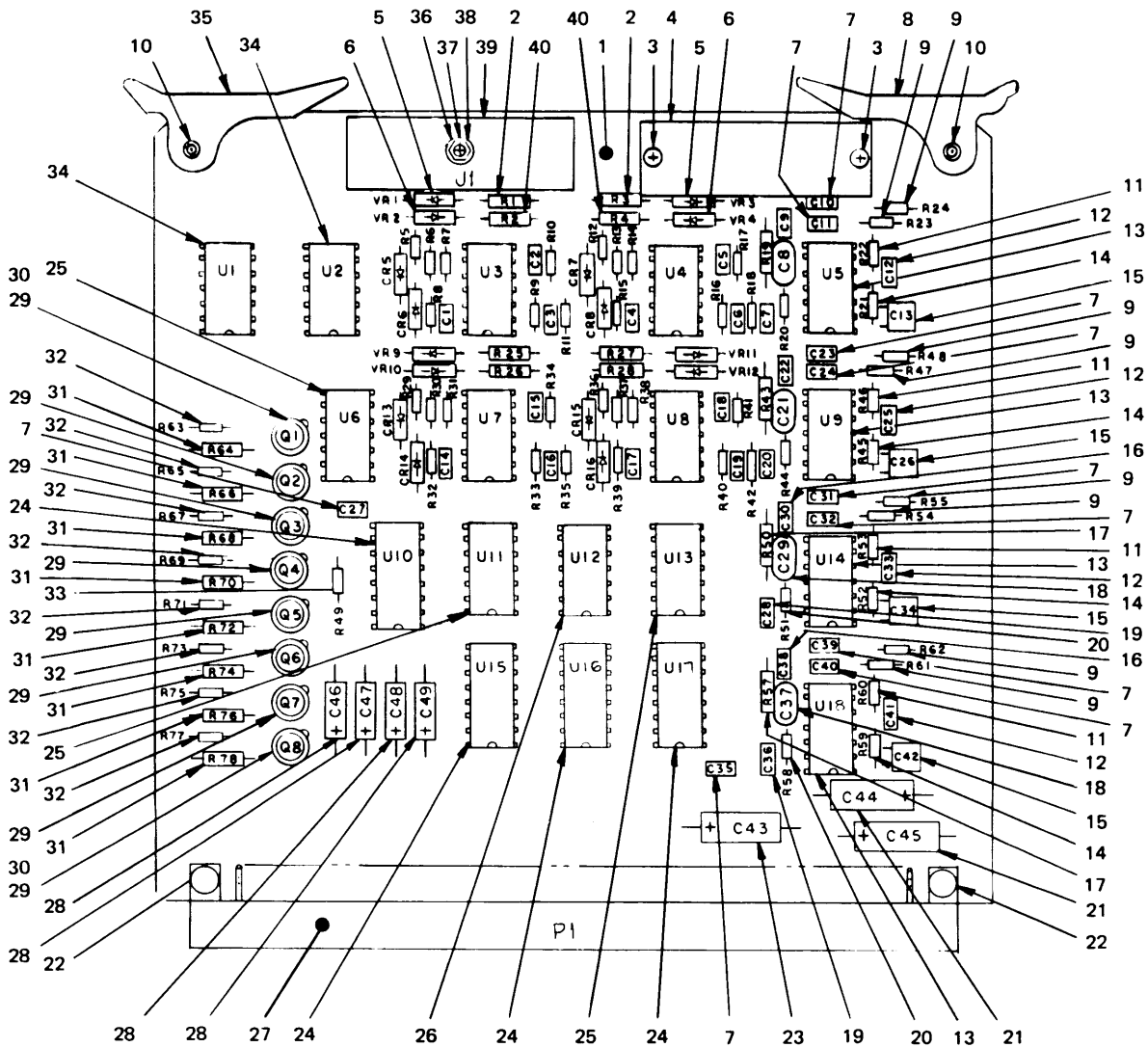


POLARIZATION CHART		
LEFT KEY	RIGHT KEY	DASH NO.
B	B	-1
B	D	-2
B	F	-3
B	H	-4
G	G	-5
G	C	-6
G	A	-7
NONE	NONE	-8

PREFIX ALL REFERENCE DESIGNATORS WITH A1A1P1, A1A2P1, A1A3P1, A1A4P1, A1A5P1, OR A1A6P1

16-117616-1

Figure 4. Electrical Receptical Connector A1A1P1, A1A2P1, A1A3P1, A1A4P1, A1A5P1, or A1A6P1

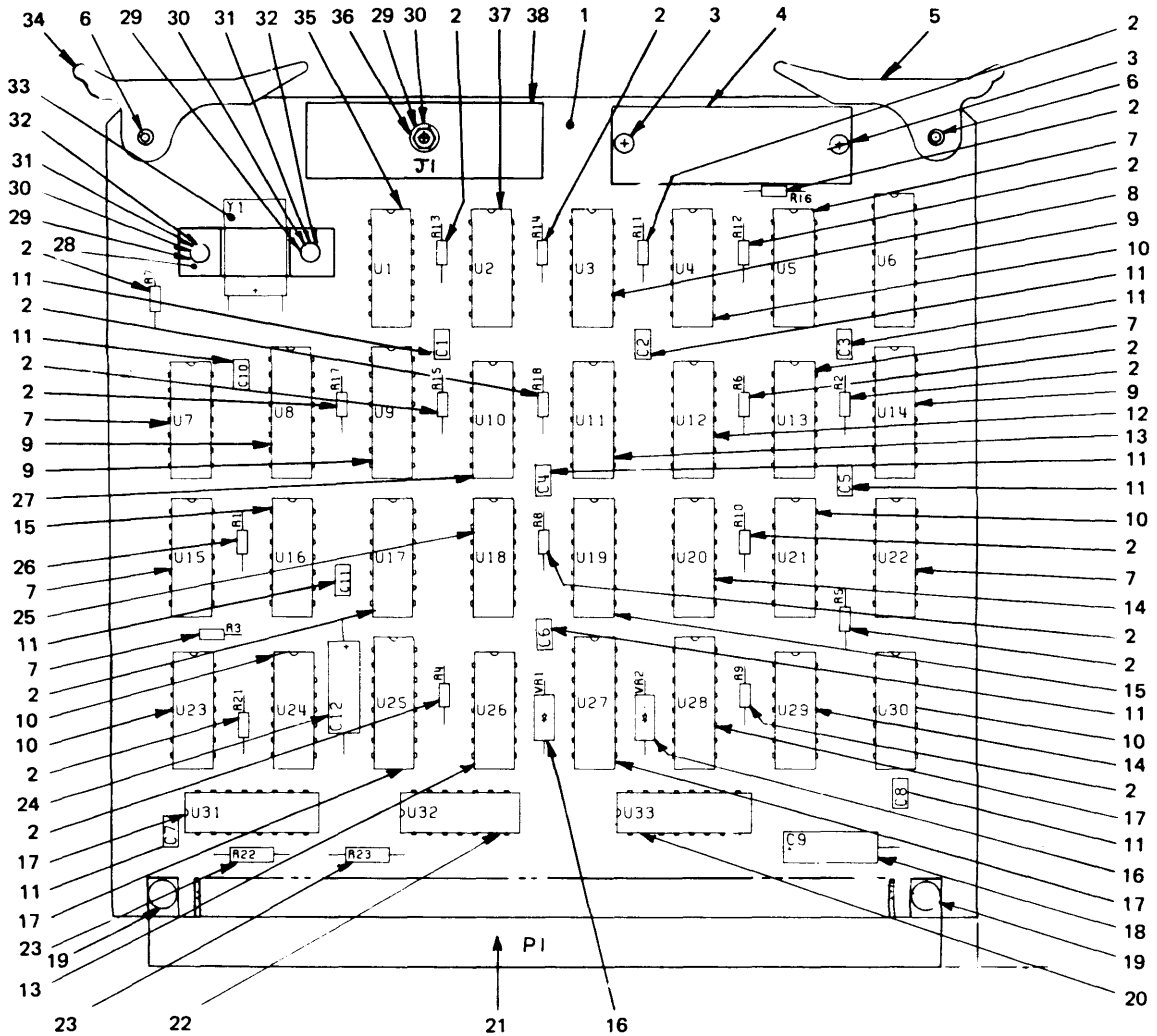


PREFIX ALL REFERENCE DESIGNATORS WITH A1A2

10-118714-1

Figure 5. Read-Write Logic CCA A1A2 (Sheet 1 of 2)





PREFIX ALL REFERENCE DESIGNATORS WITH A1A3

10-118724-1

Figure 6. Read Data Sync CCA A1A3



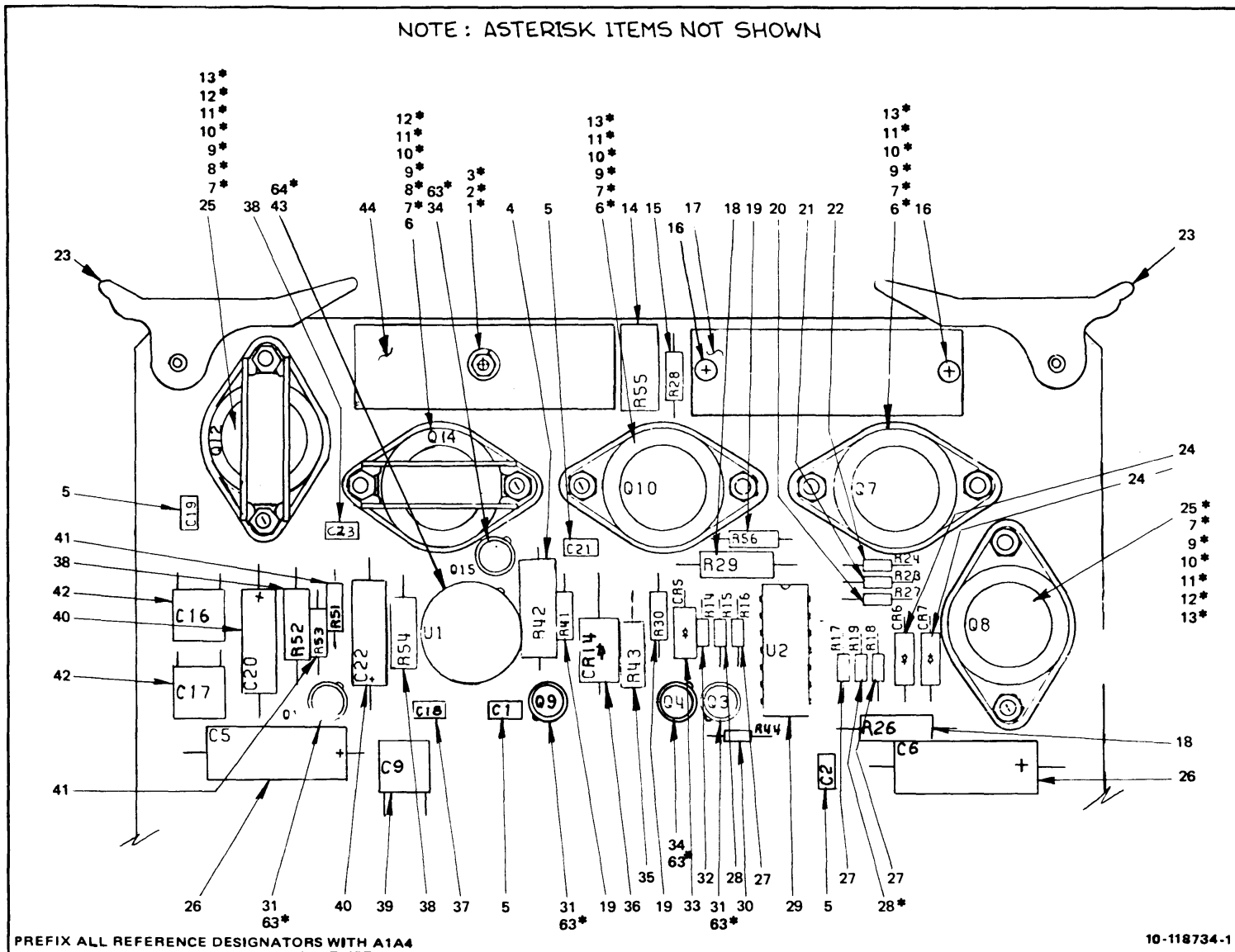


Figure 7. Tape Motion Control CCA A1A4 (Sheet 1 of 2)

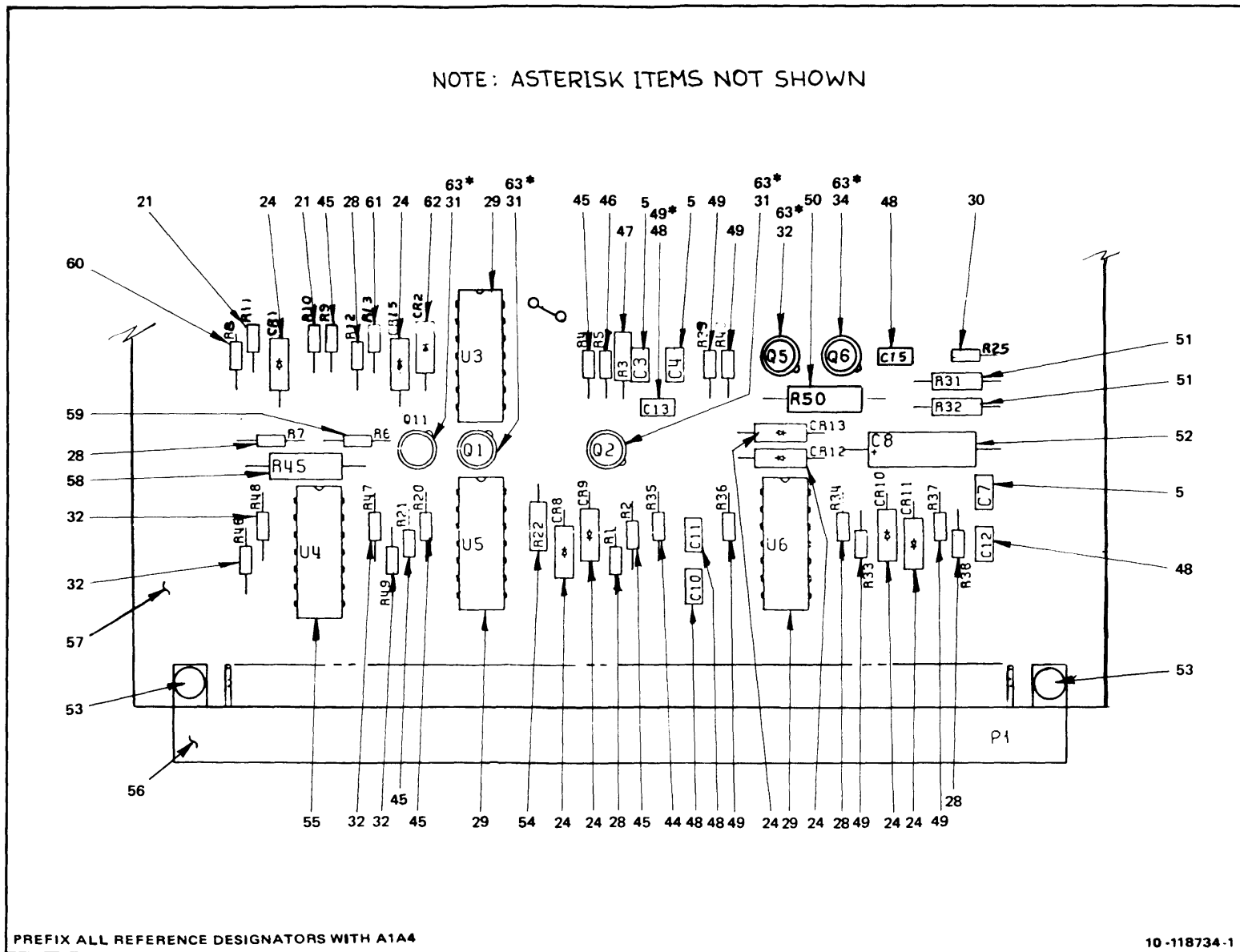
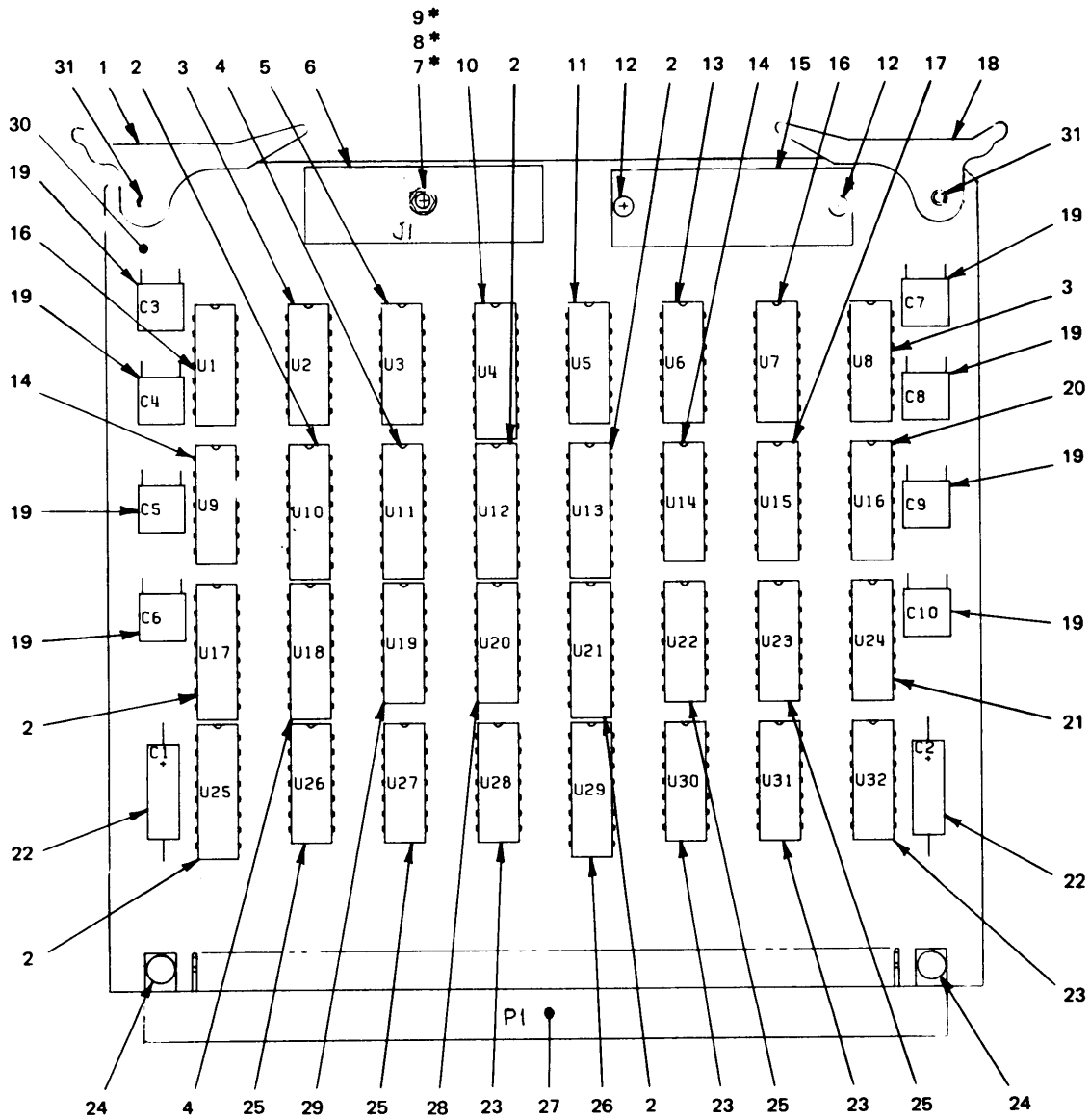


Figure 7. Tape Motion Control CCA A1A4 (Sheet 2 of 2)

NOTE: ASTERISK ITEMS NOT SHOWN

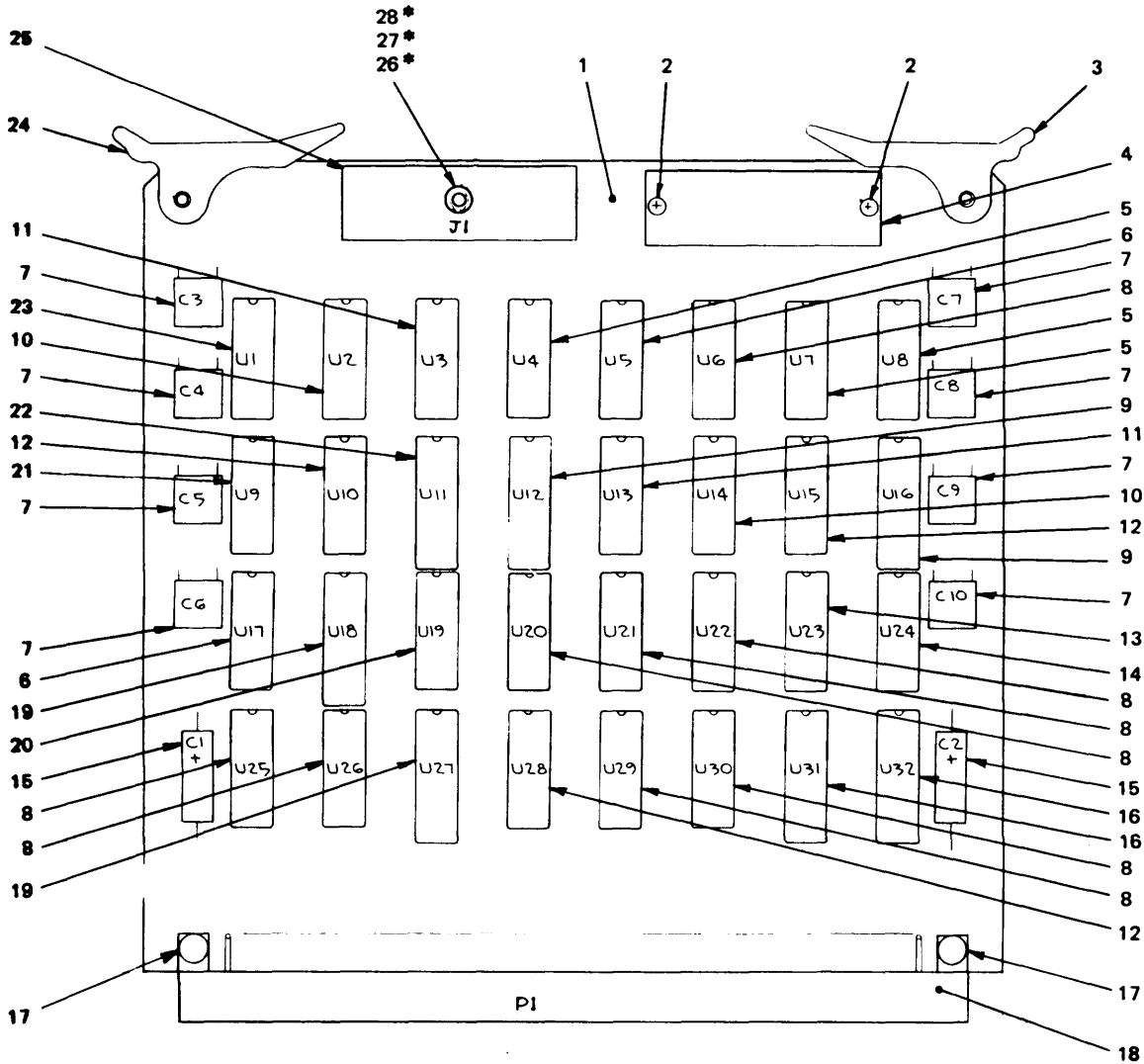


PREFIX ALL REFERENCE DESIGNATORS WITH A1A5

10-118744-1

Figure 8. Interface Reader CCA A1A5

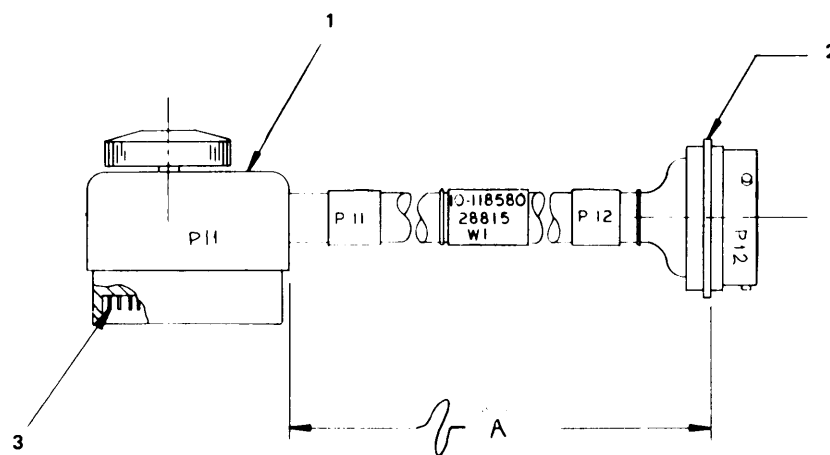
NOTE: ASTERISK ITEMS NOT SHOWN



PREFIX ALL REFERENCE DESIGNATORS WITH A1A6

10-118754-1

Figure 9. Write Interface CCA A1A6

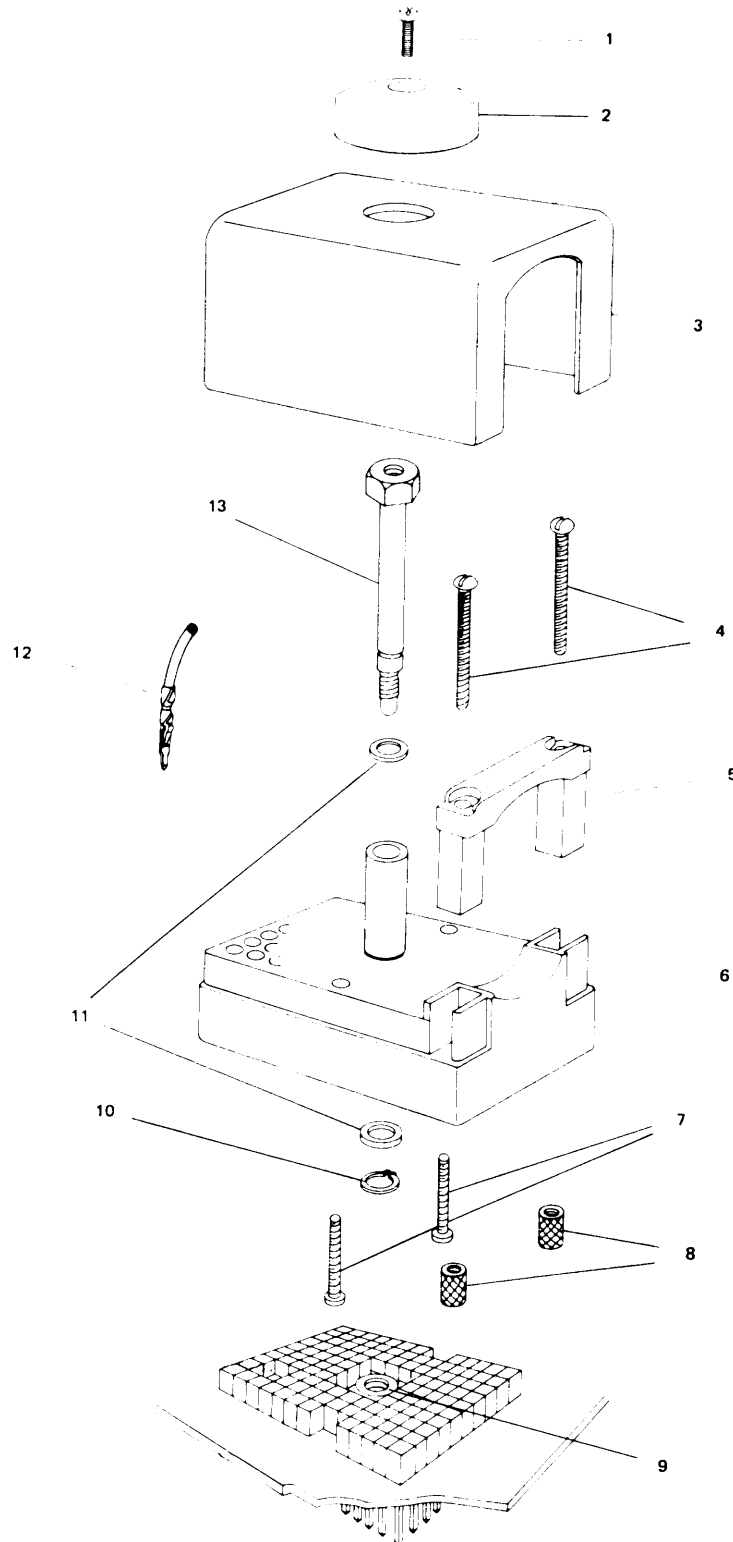


TABULATION	
DASH NO.	"A" DIMENSION
-1	6 ± .25
-2	5 ± .25
-3	6 ± .25

PREFIX ALL REFERENCE DESIGNATORS WITH A1W1

10-118580

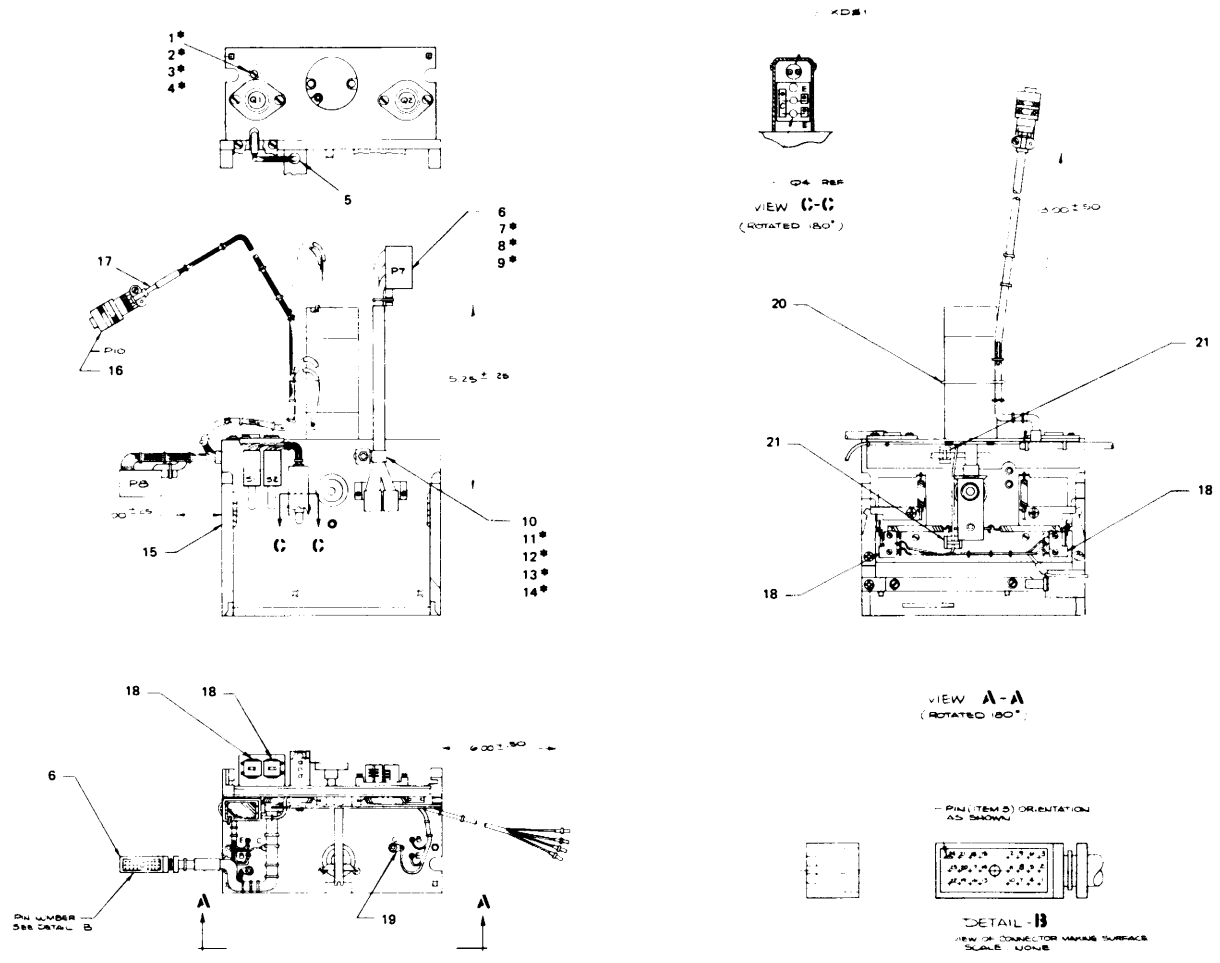
Figure 10. Wiring Harness A1W1



PREFIX ALL REFERENCE DESIGNATORS WITH A1W1P11, A1Z1P7, OR A1Z1P8

Figure 11. Electrical Plug Connector A1W1P11, A1Z1P7, or A1Z1P8

NOTE: ASTERISK ITEMS NOT SHOWN



PREFIX ALL REFERENCE DESIGNATORS WITH A1Z1

10-117719-1

Figure 12. Magnetic Tape Transport A1Z1

47/(48 blank)

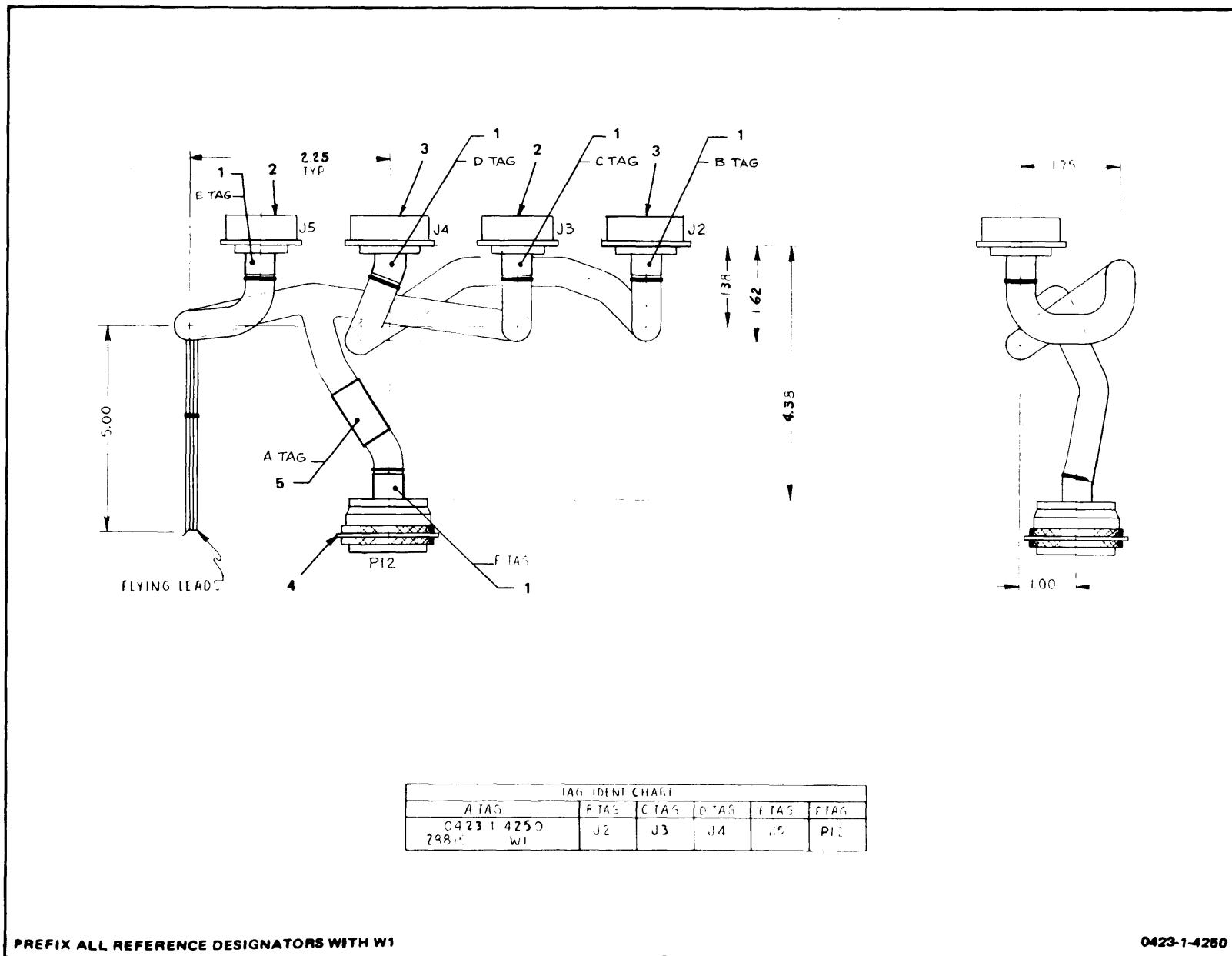


Figure 13. Electrical Special Cable Assembly W1



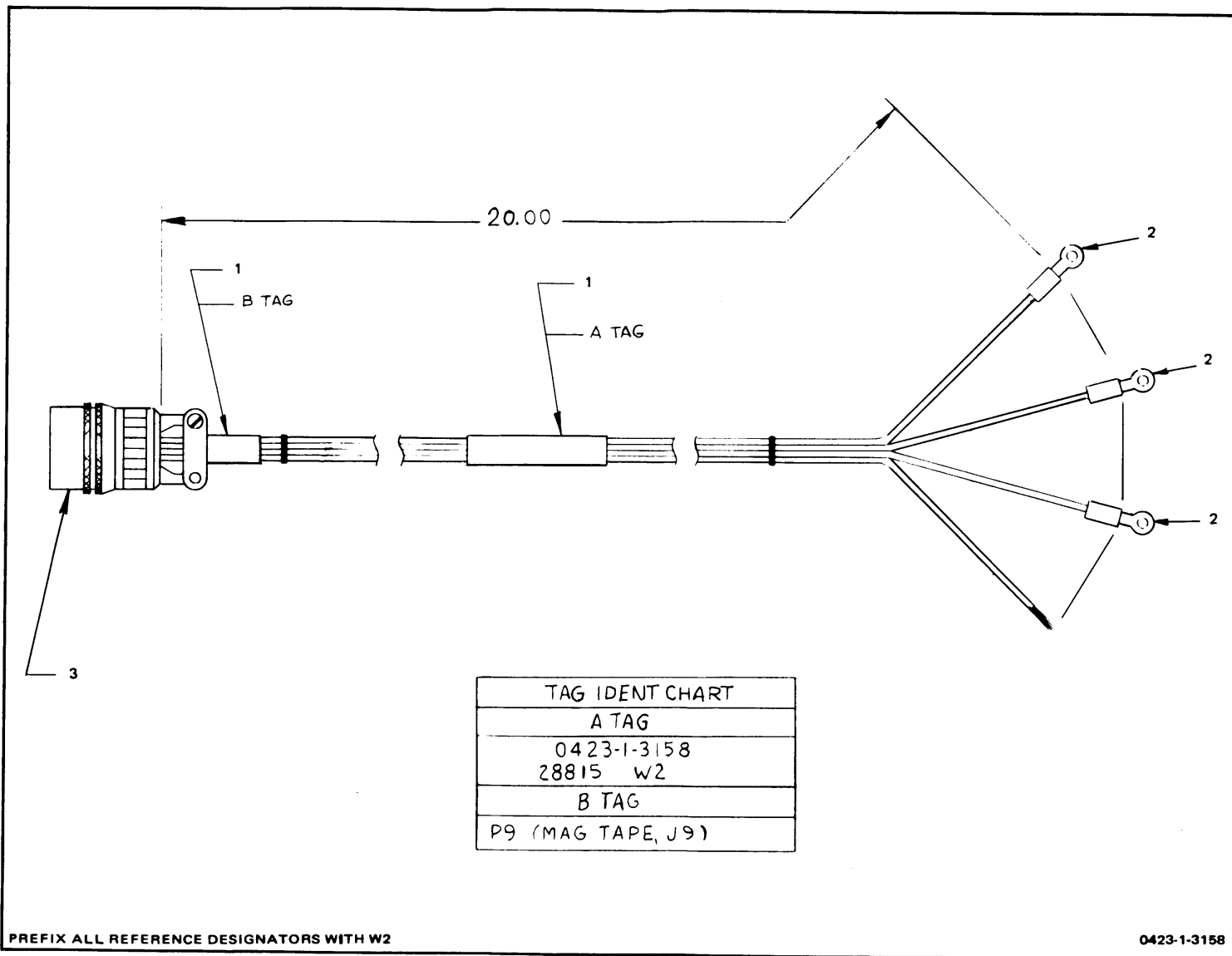


Figure 14. Electrical Special Cable Assembly W2

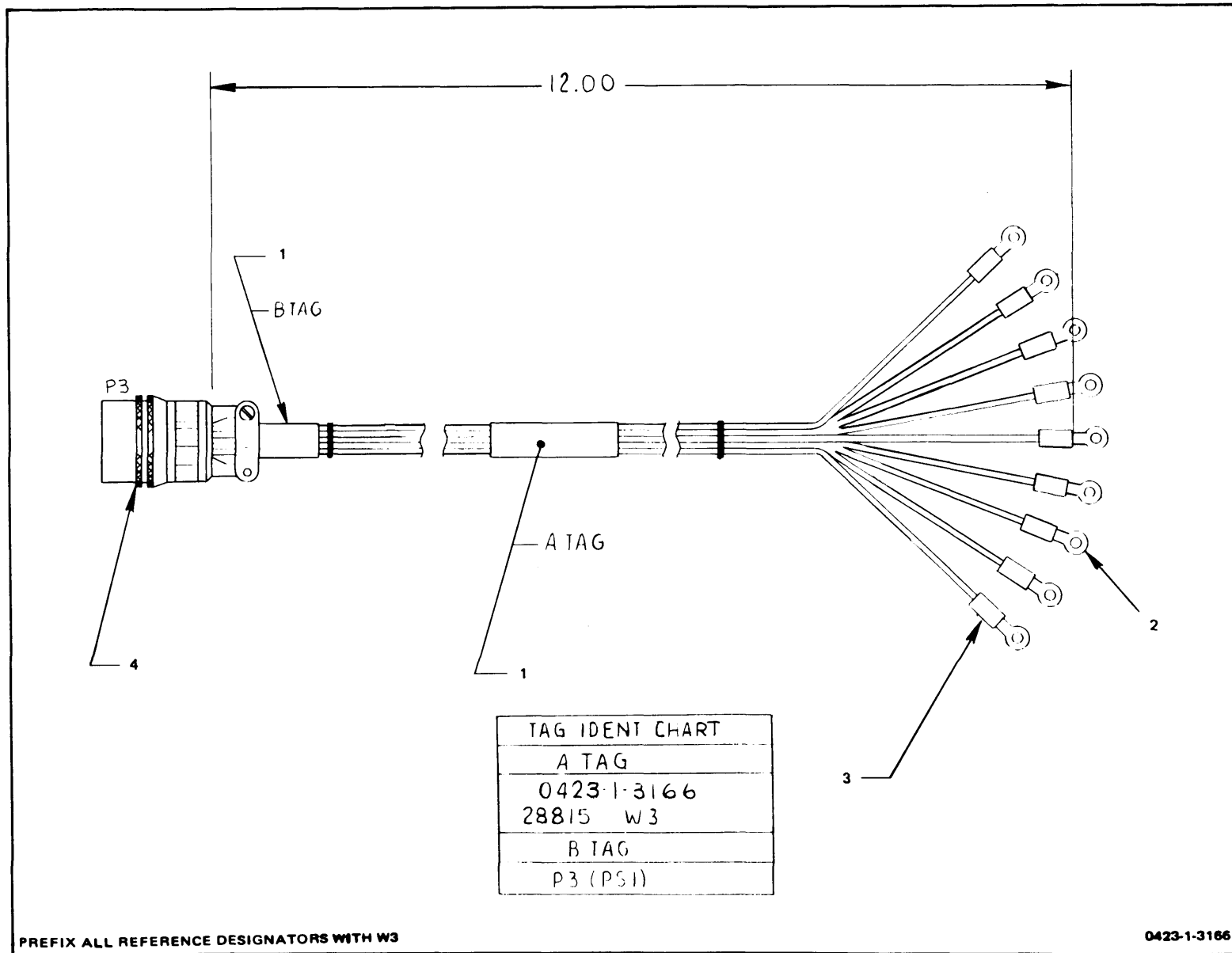
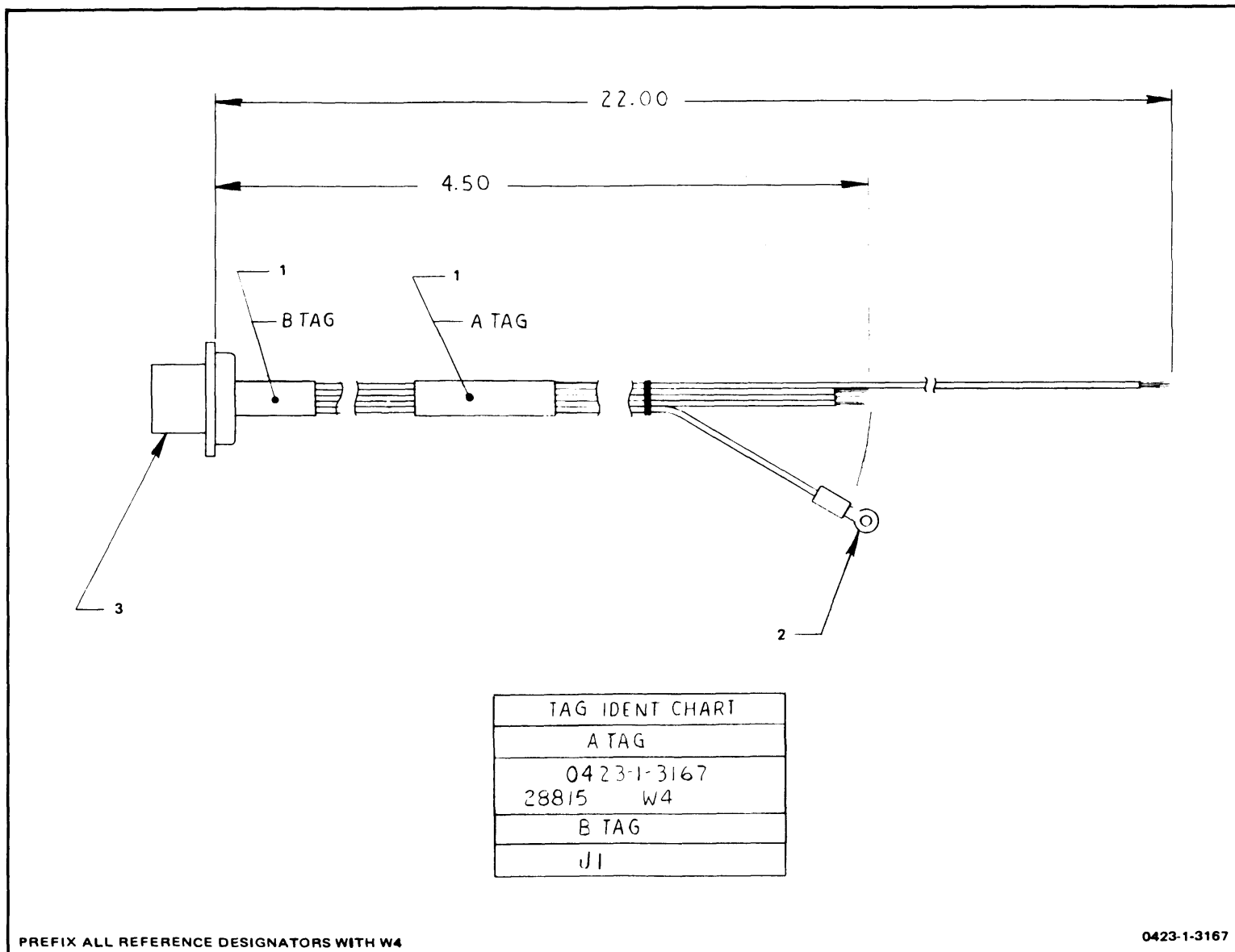


Figure 15. Electrical Special Cable Assembly W3



PREFIX ALL REFERENCE DESIGNATORS WITH W4

0423-1-3167

Figure 16. Electrical Special Cable Assembly W4

Section VI. NATIONAL STOCK NUMBER AND PART NUMBER INDEX

STOCK NUMBER	FIG NO.	ITEM NO.	STOCK NUMBER	FIG NO.	ITEM
3439-00-752-8728	BULK		5320-00-243-8357	9	17
5305-00-050-9227	1	19	5325-00-926-1394	BULK	
	3	21	5340-00-984-6629	1	56
	5	36	5821-00-140-8912	1	24
	6	36	5905-00-106-3668	7	51
	7	1	5905-00-106-9344	7	50
	8	7	5905-00-110-7625	7	19
	9	26	5905-00-111-4845	5	40
5305-00-054-5646	1	81	5905-00-114-5388	7	58
5305-00-054-5647	2	10	5905-00-116-2394	3	24
5305-00-054-5648	2	27		5	2
5305-00-054-5649	2	6	5905-00-116-8569	7	18
	7	13	5905-00-119-8768	7	47
5305-00-054-5650	7	12	5905-00-119-8811	5	17
5305-00-054-5651	1	59	5905-00-125-0897	7	38
5305-00-054-5656	2	29	5905-00-135-6046	7	54
5305-00-054-6650	1	25	5905-00-136-8405	6	23
5305-00-054-6651	1	69	5905-00-141-0593	7	35
	2	44	5905-00-141-1183	7	41
5305-00-054-6652	2	35	5905-00-148-4477	7	14
5305-00-054-6656	1	31	5905-00-180-8303	7	60
	12	11	5905-00-235-3534	7	4
5305-00-054-6667	1	45	5905-00-255-2700	5	14
5305-00-054-6668	1	79	5905-00-401-7427	7	30
5305-00-054-9961	1	49	5905-00-402-7049	5	9
	2	26	5905-00-403-8837	3	33
5305-00-059-3656	1	2		5	43
5305-00-066-7326	2	39		7	27
5305-00-066-7327	2	46	5905-00-407-0089	7	22
5305-00-088-9665	1	8	5905-00-433-6483	5	41
5305-00-225-6400	1	55		7	46
	2	41	5905-00-435-1718	5	31
5305-00-245-4708	12	1	5905-00-443-8963	8	10
5305-00-253-5606	3	3		9	22
	5	3	5905-00-458-9500	3	25
	6	3		6	26
	7	16	5905-00-470-9481	3	2
	8	12		5	33
	9	2		6	2
5305-00-780-8454	1	53	5905-00-470-9482	7	32
5305-00-814-1707	1	14		7	59
5305-00-889-2991	1	77	5905-00-484-7550	5	20
5305-00-958-2918	2	47		7	49
5305-00-988-1723	1	62	5905-00-492-7607	5	47
5305-00-993-9189	1	22		7	28
	2	2	5905-00-617-5089	3	12
5310-00-058-3599	1	50	5905-00-617-5091	3	30
	12	2		5	11
5310-00-550-5054	1	63		7	45
	7	10	5905-00-617-5093	7	61
5310-00-582-9594	7	11	5905-00-761-5758	5	32
5310-00-595-6761	1	15		7	21
	3	39	5910-00-022-2760	8	19
	5	38		9	7
	6	30	5910-00-022-5655	5	45
	7	2		7	37
	8	9	5910-00-103-7748	7	42
	9	27	5910-00-113-7671	7	48
5310-00-619-1148	1	3	5910-00-113-7673	3	10
5310-00-655-9401	12	12		5	7
5310-00-722-5998	2	36		6	11
5310-00-803-4663	1	28		7	5
5310-00-810-7785	1	51	5910-00-137-0936	5	16
5310-00-880-5976	1	9	5910-00-151-7564	1	30
5310-00-928-2690	1	16	5910-00-220-3407	5	15
	6	32		7	39
5310-00-929-6395	1	10	5910-00-255-3694	5	12
	2	37	5910-00-468-3874	5	19
	12	13	5910-00-483-4531	5	46
5310-00-933-8118	1	35	5920-00-556-0144	1	67
	2	8	5935-00-044-4145	2	11
	12	3	5935-00-137-8901	2	13
5310-00-933-8120	1	4	5935-00-491-5750	13	3
5310-00-933-8121	1	64	5935-00-715-2756	2	16
5310-00-934-9748	7	9	5935-00-726-6519	14	3
5310-00-955-1802	1	32	5935-00-762-1495	15	4
5320-00-243-8357	3	37	5935-00-838-3835	12	16
	5	22	5935-00-851-2451	3	40
	6	19		5	39
	7	53		6	38
	8	24		7	44
				8	6

Section VI. NATIONAL STOCK NUMBER AND PART NUMBER INDEX

STOCK NUMBER	FIG NO.	ITEM NO.	STOCK NUMBER	FIG NO.	ITEM
5935-00-851-2451	9	25	6850-00-927-9461	BULK	
5935-00-901-5782	2	17	8030-00-163-5792	BULK	
5940-00-156-7344	12	19			
5940-00-231-4430	14	2			
	15	2			
5940-00-983-6046	1	6			
5961-00-189-3175	1	41			
5961-00-410-5450	7	7			
5961-00-484-4604	1	38			
5961-00-556-2091	3	32			
	5	42			
	7	33			
5961-00-925-3777	7	34			
5961-00-927-5042	7	6			
5691-00-951-8757	3	26			
	5	29			
	7	31			
5962-00-036-8724	3	17			
5962-00-118-6121	6	14			
5962-00-148-4145	6	35			
5962-00-169-3826	3	5			
	6	7			
	8	3			
	9	5			
5962-00-171-0055	6	9			
5962-00-247-3396	8	13			
5962-00-284-3475	9	16			
5962-00-285-3302	3	16			
5962-00-321-8117	8	2			
5962-00-325-3793	8	26			
	9	9			
5962-00-339-6427	5	24			
5962-00-361-8648	5	26			
	8	28			
5962-00-378-0216	8	23			
	9	14			
5962-00-429-6121	8	25			
	9	8			
5962-00-434-1006	7	29			
5962-00-451-5830	3	11			
	6	27			
	9	10			
5962-00-451-5831	3	13			
	6	13			
	8	5			
	9	12			
5962-00-451-5823	3	9			
	6	8			
	9	23			
5962-00-451-5834	6	25			
5962-00-451-5835	8	14			
5962-00-451-5836	3	35			
	8	29			
	9	13			
5962-00-451-5837	9	11			
5962-00-451-5839	3	29			
	6	37			
5962-00-452-0969	8	20			
5962-00-481-2858	6	22			
	7	55			
	8	11			
5962-00-509-1860	3	36			
	6	12			
5962-00-510-9232	3	19			
	5	34			
	6	15			
	8	16			
	9	21			
5962-00-546-1735	9	6			
5962-00-632-8248	6	10			
5962-00-714-1791	3	23			
	5	25			
	8	17			
	9	20			
5962-00-933-9735	8	21			
5970-00-001-9359	BULK				
5790-00-355-8018	4	5			
5970-00-767-0551	BULK				
5999-00-107-0628	7	63			
5999-00-136-4054	7	8			
5999-00-335-8486	10	3			
	12	7			

Section VI. NATIONAL STOCK NUMBER AND PART NUMBER INDEX - Continued

PART NUMBER	FSCM	FIG. NO.	ITEM NO.	PART NUMBER	FSCM	FIG. NO.	ITEM NO.
ASL3-4	34159	12	17	MS15795-802	96906	8	9
CG952Uo35V3C33PH	90201	1	29		96906	9	27
CHRCO	71643	BULK		MS15795-803	96906	1	27
CK05SX102KL	81349	5	45		96906	2	7
	81349	7	37	MS15795-804	96906	1	32
CK05BX104KL	81349	3	10	MS15795-805	96906	2	36
	81349	5	7	MS15795-806	96906	1	9
	81349	6	11	MS15795-808	96906	1	3
	81349	7	5	MS15795-809	96906	1	63
CK0SBX220KL	81349	5	19		96906	7	10
CK0SBX471KL	81349	5	12	MS20470AD2-5	96906	3	37
CK0SBX472KL	81349	5	16		96906	5	22
CKOSBX473KL	81349	7	48		96906	6	19
CKOSBX683KL	81349	5	46		96906	7	53
CK06BX1O4KL	81349	8	19		96906	8	24
	81349	9	7		96906	9	17
CK06RX1OSKL	81349	7	42	MS21318-1	96906	3	3
CK06BX224KL	81349	5	15		96906	5	3
	81349	7	39		96906	6	3
CLN1-4	14000	12	10		96906	7	16
CP09A1KE274KE	81349	1	47		96906	8	12
CR69U5-12MHZ	81349	6	33		96906	9	2
CS13C396KL	81349	3	14	MS24693C2	96906	1	22
CS13C475KL	81349	3	31		96906	2	2
	81349	5	28	MS24693C24	96906	2	39
CS13D226KL	81349	3	18	MS24693C26	96906	2	47
	81349	5	23	MS24693C28	96906	2	46
	81349	6	18	MS24693C29	96906	1	8
	81349	7	52	MS24693C3	96906	1	55
	81349	8	22		96906	2	41
	81349	9	15		96906	12	1
CS13E156KL	81349	5	21	MS24693C4	96906	1	49
	81349	6	24		96906	2	26
	81349	7	40	MS24693C48	96906	1	77
CS13F226KL	81349	7	26	MS24693C7	96906	1	53
DC300A	94959	2	23	MS27473E22A1P	96906	2	14
DMSCC050D	72136	5	18		96906	13	4
DM7095D	27014	6	20	MS27506A22-2	96906	2	13
D4-140	95987	12	12	MS27508E12A8S	96906	16	3
EXE20-19-32-0	81349	BULK		MS27508E20A2S	96906	13	3
EXE20-19-32-2	81349	BULK		MS27508E22A1S	96906	10	2
EXE20-19-32-5	81349	BULK		MS27508E22A2S	96906	13	2
EXE20-19-36-91	81349	BULK		MS3112E10-6P	96906	2	17
EXE24-19-36-0	81349	BULK		MS3112E8-3S	96906	2	11
EXE24-19-36-5	81349	BULK		MS3116F12-10S	96906	15	4
EXE24-19-36-6	81349	BULK		MS3116F8-3P	96906	12	16
EXE24-19-36-90	81349	BULK		MS3126F10-6P	96906	14	3
EXE24-19-36-902	81349	BULK		MS3126F10-6S	96906	2	16
EXE24-19-36-903	81349	BULK		MS35206-279	96906	1	62
EXE24-19-36-904	81349	BULK		MS35335-57	96906	1	50
EXE24-19-36-905	81349	BULK			96906	12	2
EXE24-19-36-906	81349	BULK		MS35335-70	96906	7	11
EXE24-19-36-92	81349	BULK		MS35338-134	96906	1	16
EXE24-19-36-93	81349	BULK			96906	6	32
EXE24-19-36-94	81349	BULK		MS35338-135	96906	1	35
EXE24-19-36-95	81349	BULK			96906	2	8
EXE24-19-36-96	81349	BULK			96906	12	3
EXE24-19-36-97	81349	BULK		M5S35338-136	96906	1	10
EXE24-19-36-98	81349	BULK			96906	2	37
EXE28-7-36-09	81349	BULK			96906	12	13
HDH4	94570	1	78	MS35338-138	96906	1	4
H01-04	15653	1	28	MS35338-139	96906	1	64
IN4614	81349	7	62	MS35649-244	96906	7	9
I0-100	31413	10	1	MS51957-12	96906	1	81
	31413	11		MS51957-13	96906	2	10
	31413	12	6	MS51957-14	96906	2	27
JANTX1N33238	81349	1	21	MS51957-15	96906	2	6
JANTXIN3891	81349	1	38		96906	7	13
JANTXIN3891R	81349	1	41	MS51957-16	96906	7	12
LM1514J	12040	5	44	MS51957-17	96906	1	59
MC4324L	04713	6	35	MS51957-22	96906	2	29
MDX3	71400	1	66	MS51957-26	96906	1	25
MILS22743GRADE	81349	BULK		MS51957-27	96906	1	69
MILT43433	81349	BULK			96906	2	44
MILT43435	81349	BULK		MS51957-28	96906	2	35
MILW16878-4-20AW	81349	BULK		MS51957-3	96906	6	31
MILW16878-4-24AW	81349	BULK		M551957-32	96906	1	31
MS15795-802	96906	1	15		96906	12	11
	96906	3	39	MS51957-42	96906	1	45
	96906	5	38	MS51957-43	96906	1	79
	96906	6	30	MS51957-5	96906	3	21
	96906	7	2		96906	5	36

Section VI. NATIONAL STOCK NUMBER AND PART NUMBER INDEX - Continued

PART NUMBER	FSCM	FIG. NO.	ITEM NO.	PART NUMBER	FSCM	FIG NO.	ITEM NO.
MS51957-5	96906	6	36	SN54L00J	01295	9	10
	96906	7	1	SN54L04J	01295	3	13
	96906	8	7		01295	6	13
	96906	9	26		01295	8	5
MS51957-61	96906	1	19		01295	9	12
MS51958-60	96906	1	2	SN54L10J	01295	3	9
MS600-8XP1A	75382	1	7		01295	6	8
M24066-2-132	81349	1	48		01295	9	23
M39029-1-16-20	81349	12	18	SN54L193J	01295	6	9
NAS662C2R4	80205	1	14	SN54L20J	01295	6	25
NAS671-4	80205	1	51	SN54L30J	01295	8	14
NAS6T1-62	80205	1	17	SN54L73J	01295	3	35
	80205	3	38		01295	8	29
	80205	5	37		01295	9	13
	80205	6	29	SN54L74J	01295	3	5
	80205	7	3		31295	6	7
	80205	8	8		01295	8	3
	80205	9	28		01295	9	5
NAS671-64	80205	1	36	SN54L78J	01295	9	11
	80205	2	12	SN54L86J	01295	3	29
	80205	12	4		01295	6	37
NAS671-66	80205	1	11	SN54L93J	01295	8	20
	80205	12	14	SN54L95J	01295	8	25
N276	08863	1	52		01295	9	8
PVC1-4	29005	BULK		SN54L98J	01295	9	19
PVC1-8	29005	BULK		SN5400J	01295	6	22
QQS571SN60WRAP3	81348	BULK			01295	7	55
RCR0SG102JS	81349	3	25		01295	8	11
	81349	6	26	SN5404J	01295	3	23
	81349	5	47		01295	5	25
	81349	7	28		01295	8	17
	81349	5	14		01295	9	20
RCR05G121JS	81349	7	60	SN5408J	01295	3	19
RCR05G152JS	81349	3	12		01295	5	34
RCR05G153JS	81349	5	20		01295	6	15
RCR05G154JS	81349	7	49		01295	8	16
	81349	3	2		01295	9	21
	81349	5	33	SN541J7J	01295	9	6
	81349	6	2	SN54123J	01295	?	16
	81349	T	32	SN54175J	01295	8	2
RCR05G223JS	81349	3	33	SN5420J	01295	3	36
	81349	5	43		01295	6	12
	81349	7	27	SN5427J	01295	3	17
	81349	7	20	SN5432J	01295	8	21
RCR05G243JS	81349	7	59	SN5438J	01295	8	23
PCR0SG274JS	81349	7	30		01295	9	14
RCR05G332JS	81349	5	41	SN5473J	01295	6	14
RCR05G392JS	81349	7	46	SN5474J	01295	8	13
	81349	5	9	SN5486J	01295	5	26
RCR05G470JS	81349	5	32		31295	8	28
RCR0SG471JS	81349	7	21	SST2-5MM	06383	12	20
RCR0SG472JS	81349	3	30	TM1S6M	06383	12	21
	81349	5	11	TP8-8	81312	3	40
	81349	7	45		81312	5	39
RCR0SG473JS	81349	7	61		81312	6	38
RCR05G753JS	81349	7	22		81312	7	44
RCR07G101JS	81349	7	41		81312	8	6
RCP07G102JS	81349	7	19		81312	9	25
RCR07G131JS	81349	6	23	U6A7709312	34335	5	13
RCR07G151JS	81349	5	17	U6W7747312	34335	7	29
RCR07G201JS	81349	5	40	U7893L2251X	34335	8	26
RCR07G202JS	81349	7	15		34335	9	9
RCR07G220JS	81349	7	51	U7B93L2451X	34335	9	16
RCR07G241JS	81349	5	31	U7893L2851X	34335	5	24
RCR07GS11JS	81349	3	24	VC3	04866	BULK	
	81349	5	2	VN25A5A	15755	1	18
RCR07G681JS	81349	7	54	VR8	37942	1	30
RCR07G821JS	81349	7	47	WG301	95987	BULK	
RCR20G1R2JS	81349	7	38	WTW12112	59730	13	1
RCR20G101JS	81349	7	50	WTW2112	59730	13	5
RCR20G182JS	81349	7	35		59730	14	1
RCR20G220JS	81349	7	58		59730	15	1
RCR200G821JS	81349	7	18		59730	16	1
RCR32G681JS	81349	7	4	OVP5-11	15755	1	24
RH10-0-5-3	91637	1	13	001-1802-509	31413	4	4
RH5-200-3	91637	1	23	001-1805-509	31413	4	1
SCL1-8	06090	BULK		001-6500-502	31413	10	3
SE26-1	11452	1	39		31413	12	7
SN54LS10J	01295	3	20	001-6500-513	31413	11	12
SN54LS74J	01295	6	10	01-145210	28815	1	73
SN54L00J	01295	3	L11	01-931313	28815	1	74
	01295	6	27	010-2500-501	31413	BULK	

Section VI. NATIONAL STOCK NUMBER AND PART NUMBER INDEX - Continued

PART NUMBER	FSCM	FIG. NO.	ITEM NO.	PART NUMBER	FSCM	FIG. NO.	ITEM NO.
010-2501-501	31413	BULK		12-117738-2	28815	5	35
010-2502-501	31413	BULK		12-117738-3	28815	6	34
010-2503-501	31413	BULK		12-117738-5	28815	8	1
010-2509-501	31413	BULK		12-117738-6	28815	9	24
010-2510-501	31413	BULK		12-117739-1	28815	2	24
0423-1-2075-1	15942	1	68	12-118576-1	28815	3	6
0423-1-3008-1	15942	1	58	12-118576-11	28815	2	32
0423-1-3090-1	15942	1	33	12-118576-2	28815	5	4
0423-1-3091-1	15942	1	26	12-118576-3	28815	6	4
0423-1-3092-1	15942	1	1	12-118576-4	28815	7	17
0423-1-3093-1	15942	1	61	12-118576-5	28815	8	15
0423-1-3094-1	15942	1	20	12-118576-6	28815	9	4
0423-1-3095-1	15942	1	34	12-118703-1	28815	3	1
0423-1-3096-1	15942	1	40	12-118713-1	28815	5	1
0423-1-3097-1	15942	1	37	12-118723-1	28815	6	1
0423-1-3158-1	15942	1	65	12-118733-1	28815	7	57
	15942	14		12-118743-1	28815	9	1
0423-1-3166-1	15942	1	12	12-118743-2	28815	8	30
	15942	15		12-122966-2	28815	2	34
0423-1-3167-1	15942	1	71	14007-1P4	91506	3	8
	15942	16			91506	5	10
0423-1-3200-9	15942	1	80		91506	6	6
0423-1-4068-1	15942	1	70		91506	8	31
0423-1-4174-1	15942	1	42	14015	82817	1	56
0423-1-4175-1	15942	1	72	1416-6	83330	12	19
0423-1-4231-1	15942	1		1544	75291	BULK	
0423-1-4250-1	15942	1	60	16-117616-1	28815	3	22
	15942	13			28815	4	
0423-1-5018-1	15942	1	46	16-117616-2	28815	4	
0423-1-5019-1	15942	1	43		28815	5	27
1N270	81349	3	32	16-117616-3	28815	4	
	81349	5	42		28815	6	21
	81349	7	33	16-117616-4	28815	4	
1N3189	81349	7	36		28815	7	56
1N4148	81349	3	15	16-117616-5	28815	4	
	81349	5	48		28815	8	27
	81349	7	24	16-117616-6	28815	4	
1N751A	81349	5	5		28815	9	18
1N758A	81349	5	6	16-117720-1	28815	12	15
1N759A	81349	6	16	16-119808-1	28815	BULK	
10-117719-1	28815	2	22	1775	71744	1	75
	28815	12		2N2222A	81349	3	26
10-118580-3	28815	2	15		81349	5	29
	28815	10			81349	7	31
10-118704-1	28815	2	18	2N2907A	81349	7	34
	28815	3		2N3740	81349	7	6
10-118714-1	28815	2	19	2N3766	81349	7	25
	28815	5		200P35CT	15755	1	5
10-118724-1	28815	2	20	2185-1-8	83330	12	5
	28815	6		302-0002-002	31413	BULK	
10-118734-1	28815	2	21	304-0001-002	31413	4	5
	28815	7		313-0000-000	31413	11	6
10-118744-1	28815	2	4	3250W66-202	32997	7	14
	28815	8		32562	00779	14	2
10-118754-1	28815	2	3		00779	15	2
	28815	9		3341DM	07263	6	17
10-120920-1	28815	1	44	340	71984	BULK	
	28815	2		342025	75915	1	67
10233550832	06540	1	76	37T85	81349	1	6
10648EL11	08719	2	43	43-66-1	13103	7	7
119-0102	01295	7	64	4814-1-05-19	71279	1	57
119-0103	01295	3	27	512-0000-000	31413	11	13
	01295	5	30	516-0002-505	31413	BULK	
12-117697-1	28815	2	31	516-0027-000	31413	11	9
12-117699-1	28815	2	42	51862	00779	15	3
12-117699-2	28815	2	1		00779	16	2
12-117700-1	28815	2	25	522-0000-000	31413	11	5
12-117706-1	28815	2	30	525-0000-000	31413	11	3
12-117707-1	28815	2	33	536-0012-000	31413	4	3
12-117708-1	28815	2	45	544-0003-000	31413	BULK	
12-117710-1	28815	2	9	544-0004-000	31413	BULK	
12-117716-1	28815	2	40	544-0005-000	31413	BULK	
12-117717-1	28815	2	5	545-0000-000	31413	11	2
12-117718-1	28815	2	28	5710-17-20	28815	12	9
12-117730-1	28815	6	28	599-0000-000	31413	11	8
12-117737-1	28815	3	7	613-0001-505	31413	4	2
12-117737-2	28815	5	8	6166C	13103	7	8
12-117737-3	28815	6	5	6234SS0440	06540	12	8
12-117737-4	28815	7	23	7717-16N	13103	7	63
12-117737-5	28815	8	18	800-0155-000	31413	11	10
12-117737-6	28815	9	3	800-0156-000	31413	11	4
12-117738-1	28815	3	34	800-0157-000	31413	11	7



## Section VI. NATIONAL STOCK NUMBER AND PART NUMBER INDEX - Continued

<b>PART NUMBER</b>	<b>FSCM</b>	<b>FIG. NO.</b>	<b>ITEM NO.</b>	<b>PART NUMBER</b>	<b>FSCM</b>	<b>FIG NO.</b>	<b>ITEM NO.</b>
800-0158-000	31413	11	1				
800-0161-000	31413	11	11				
805ZS	82877	1	54				
8217A0632-10A	06540	2	38				
843V15	80740	7	43				
898-1R2K	80740	8	10				
	80740	9	22				
93L00DM	34335	3	4				
93L09DM	34335	8	4				
93L14DM	34335	3	28				

Section VI. NATIONAL STOCK NUMBER AND PART NUMBER INDEX - Continued

REFERENCE DESIGNATOR	FIG NO.	ITEM NO.	REFERENCE DESIGNATOR	FIG NO.	ITEM NO.
1A1	1	44	1A1A2	5	
1A1A	1	45	1A1A2CR5	5	48
1A1	2		1A1A2CR6	5	42
1A1A1	2	18	1A1A2CR7	5	48
1A1A1	3		1A1A2CR8	5	42
1A1A1CR1	3	15	1A1A2CR13	5	48
1A1A1CR2	3	32	1A1A2CR14	5	42
1A1A1C1	3	10	1A1A2CR15	5	48
1A1A1C2	3	10	1A1A2CR16	5	42
1A1A1C3	3	10	1A1A2C1	5	16
1A1A1C4	3	10	1A1A2C2	5	45
1A1A1C5	3	10	1A1A2C3	5	46
1A1A1C6	3	10	1A1A2C4	5	16
1A1A1C7	3	10	1A1A2C5	5	45
1A1A1C8	3	10	1A1A2C6	5	46
1A1A1C9	3	18	1A1A2C7	5	19
1A1A1C10	3	14	1A1A2C8	5	18
1A1A1C11	3	31	1A1A2C9	5	16
1A1A1J1A	3	21	1A1A2C10	5	7
1A1A1J1C	3	38	1A1A2C11	5	7
1A1A1J1B	3	39	1A1A2C12	5	12
1A1A1J1	3	40	1A1A2C13	5	15
1A1A1P1	3	22	1A1A2C14	5	16
1A1A1P1A	3	37	1A1A2C15	5	45
1A1A1P1	4		1A1A2C16	5	46
1A1A1P1Z1	4	4	1A1A2C17	5	16
1A1A1P1Z2	4	1	1A1A2C18	5	45
1A1A1P1Z3	4	5	1A1A2C19	5	46
1A1A1P1Z4	4	3	1A1A2C20	5	19
1A1A1P1Z5	4	2	1A1A2C21	5	18
1A1A1Q1	3	26	1A1A2C22	5	16
1A1A1Q2	3	26	1A1A2C23	5	7
1A1A1R1	3	2	1A1A2C24	5	7
1A1A1R2	3	2	1A1A2C25	5	12
1A1A1R3	3	2	1A1A2C26	5	15
1A1A1R4	3	2	1A1A2C27	5	7
1A1A1R5	3	2	1A1A2C28	5	19
1A1A1R6	3	2	1A1A2C29	5	18
1A1A1R7	3	2	1A1A2C30	5	16
1A1A1R8	3	2	1A1A2C31	5	7
1A1A1R9	3	2	1A1A2C32	5	7
1A1A1R10	3	2	1A1A2C33	5	12
1A1A1R11	3	2	1A1A2C34	5	15
1A1A1R12	3	2	1A1A2C35	5	7
1A1A1R13	3	25	1A1A2C36	5	19
1A1A1R14	3	25	1A1A2C37	5	18
1A1A1R15	3	24	1A1A2C38	5	16
1A1A1R16	3	12	1A1A2C39	5	7
1A1A1R17	3	30	1A1A2C40	5	7
1A1A1R18	3	33	1A1A2C41	5	12
1A1A1U1	3	36	1A1A2C42	5	15
1A1A1U2	3	35	1A1A2C43	5	23
1A1A1U3	3	5	1A1A2C44	5	21
1A1A1U4	3	4	1A1A2C45	5	21
1A1A1U5	3	5	1A1A2C46	5	28
1A1A1U6	3	9	1A1A2C47	5	28
1A1A1U7	3	5	1A1A2C48	5	28
1A1A1U8	3	35	1A1A2C49	5	28
1A1A1U9	3	29	1A1A2J1C	5	37
1A1A1U10	3	11	1A1A2J1A	5	36
1A1A1U11	3	5	1A1A2J1B	5	38
1A1A1U12	3	13	1A1A2J1	5	39
1A1A1U13	3	11	1A1A2P1	4	
1A1A1U14	3	19	1A1A2P1	5	27
1A1A1U15	3	9	1A1A2P1A	5	22
1A1A1U16	3	28	1A1A2P1Z1	4	4
1A1A1U17	3	11	1A1A2P1Z2	4	1
1A1A1U18	3	5	1A1A2P1Z3	4	5
1A1A1U19	3	17	1A1A2P1Z4	4	3
1A1A1U20	3	16	1A1A2P1Z5	4	2
1A1A1U21	3	13	1A1A2Q1	5	29
1A1A1U22	3	23	1A1A2Q2	5	29
1A1A1U23	3	20	1A1A2Q3	5	29
1A1A1U24	3	19	1A1A2Q4	5	29
1A1A1U25	3	19	1A1A2Q5	5	29
1A1A1Z1	3	27	1A1A2Q6	5	29
1A1A1Z2	3	7	1A1A2Q7	5	29
1A1A1Z3	3	34	1A1A2Q8	5	29
1A1A1Z4	3	6	1A1A2R1	5	2
1A1A1Z4A	3	3	1A1A2R2	5	40
1A1A1Z5	3	1	1A1A2R3	5	2
1A1A2	2	19	1A1A2R4	5	40

Section VI. NATIONAL STOCK NUMBER AND PART NUMBER INDEX - Continued

REFERENCE DESIGNATOR	FIG NO.	ITEM NO.	REFERENCE DESIGNATOR	FIG NO.	ITEM NO.
1A1A2R5	5	41	1A1A2U10	5	24
1A1A2R6	5	41	1A1A2U11	5	25
1A1A2R7	5	33	1A1A2U12	5	26
1A1A2R8	5	43	1A1A2U13	5	25
1A1A2R9	5	11	1A1A2U14	5	13
1A1A2R10	5	11	1A1A2U15	5	24
1A1A2R11	5	47	1A1A2U16	5	24
1A1A2R12	5	41	1A1A2U17	5	24
1A1A2R13	5	41	1A1A2U18	5	13
1A1A2R14	5	33	1A1A2VR1	5	5
1A1A2R15	5	43	1A1A2VR2	5	6
1A1A2R16	5	11	1A1A2VR3	5	5
1A1A2R17	5	11	1A1A2VR4	5	6
1A1A2R18	5	47	1A1A2VR9	5	5
1A1A2R19	5	17	1A1A2VR10	5	6
1A1A2R20	5	20	1A1A2VR11	5	5
1A1A2R21	5	14	1A1A2VR12	5	6
1A1A2R22	5	11	1A1A2Z1	5	30
1A1A2R23	5	9	1A1A2Z2	5	8
1A1A2R24	5	9	1A1A2Z3	5	35
1A1A2R25	5	2	1A1A2Z4	5	4
1A1A2R26	5	40	1A1A2Z4A	5	3
1A1A2R27	5	2	1A1A2Z5	5	1
1A1A2R28	5	40	1A1A3	2	20
1A1A2R29	5	41	1A1A3	6	
1A1A2R30	5	41	1A1A3C1	6	11
1A1A2R31	5	33	1A1A3C2	6	11
1A1A2R32	5	43	1A1A3C3	6	11
1A1A2R33	5	11	1A1A3C4	6	11
1A1A2R34	5	11	1A1A3C5	6	11
1A1A2R35	5	47	1A1A3C6	6	11
1A1A2R36	5	41	1A1A3C7	6	11
1A1A2R37	5	41	1A1A3C8	6	11
1A1A2R38	5	33	1A1A3C9	6	18
1A1A2R39	5	43	1A1A3C10	6	11
1A1A2R40	5	11	1A1A3C11	6	11
1A1A2R41	5	11	1A1A3C12	6	24
1A1A2R42	5	47	1A1A3J1A	6	36
1A1A2R43	5	17	1A1A3J1C	6	29
1A1A2R44	5	20	1A1A3J1B	6	30
1A1A2R45	5	14	1A1A3J1	6	38
1A1A2R46	5	11	1A1A3P1	4	
1A1A2R47	5	9	1A1A3P1	6	21
1A1A2R48	5	9	1A1A3P1A	6	19
1A1A2R49	5	33	1A1A3P1Z1	4	4
1A1A2R50	5	17	1A1A3P1Z2	4	1
1A1A2R51	5	20	1A1A3P1Z3	4	5
1A1A2R52	5	14	1A1A3P1Z4	4	3
1A1A2R53	5	11	1A1A3P1Z5	4	2
1A1A2R54	5	9	1A1A3R1	6	26
1A1A2R55	5	9	1A1A3R2	6	2
1A1A2R57	5	17	1A1A3R3	6	2
1A1A2R58	5	20	1A1A3R4	6	2
1A1A2R59	5	14	1A1A3R5	6	2
1A1A2R60	5	11	1A1A3R6	6	2
1A1A2R61	5	9	1A1A3R7	6	2
1A1A2R62	5	9	1A1A3R8	6	2
1A1A2R63	5	32	1A1A3R9	6	2
1A1A2R64	5	31	1A1A3R10	6	2
1A1A2R65	5	32	1A1A3R11	6	2
1A1A2R66	5	31	1A1A3R12	6	2
1A1A2R67	5	32	1A1A3R13	6	2
1A1A2R68	5	31	1A1A3R14	6	2
1A1A2R69	5	32	1A1A3R15	6	2
1A1A2R70	5	31	1A1A3R16	6	2
1A1A2R71	5	32	1A1A3R17	6	2
1A1A2R72	5	31	1A1A3R18	6	2
1A1A2R73	5	32	1A1A3R21	6	2
1A1A2R74	5	31	1A1A3R22	6	23
1A1A2R75	5	32	1A1A3R23	6	23
1A1A2R76	5	31	1A1A3U1	6	35
1A1A2R77	5	32	1A1A3U2	6	37
1A1A2R78	5	31	1A1A3U3	6	8
1A1A2U1	5	34	1A1A3U4	6	10
1A1A2U2	5	34	1A1A3U5	6	7
1A1A2U3	5	44	1A1A3U6	6	9
1A1A2U4	5	44	1A1A3U7	6	7
1A1A2U5	5	13	1A1A3U8	6	9
1A1A2U6	5	25	1A1A3U9	6	9
1A1A2U7	5	44	1A1A3U10	6	27
1A1A2U8	5	44	1A1A3U11	6	13
1A1A2U9	5	13	1A1A3U12	6	12

Section VI. NATIONAL STOCK NUMBER AND PART NUMBER INDEX - Continued

REFERENCE DESIGNATOR	FIG NO.	ITEM NO.	REFERENCE DESIGNATOR	FIG NO.	ITEM NO.
1A1A3U13	6	7	1A1A4P1Z3	4	5
1A1A3U14	6	9	1A1A4P1Z4	4	3
1A1A3U15	6	7	1A1A4P1Z5	4	2
1A1A3U16	6	15	1A1A4Q1	7	31
1A1A3U17	6	7	1A1A4Q2	7	31
1A1A3U18	6	25	1A1A4Q3	7	31
1A1A3U19	6	15	1A1A4Q4	7	34
1A1A3U20	6	14	1A1A4Q5	7	31
1A1A3U21	6	10	1A1A4Q6	7	34
1A1A3U22	6	7	1A1A4Q7	7	6
1A1A3U23	6	10	1A1A4Q7B	7	10
1A1A3U24	6	10	1A1A4Q7A	7	13
1A1A3U25	6	17	1A1A4Q7D	7	9
1A1A3U26	6	13	1A1A4Q7C	7	11
1A1A3U27	6	17	1A1A4Q8	7	25
1A1A3U28	6	17	1A1A4Q9	7	31
1A1A3U29	6	14	1A1A4Q10	7	6
1A1A3U30	6	10	1A1A4Q11	7	31
1A1A3U31	6	17	1A1A4Q12	7	25
1A1A3U32	6	22	1A1A4Q13	7	31
1A1A3U33	6	20	1A1A4Q14	7	6
1A1A3VR1	6	16	1A1A4Q15	7	34
1A1A3VR2	6	16	1A1A4R1	7	28
1A1A3Y1	6	33	1A1A4R2	7	45
1A1A3Z1D	6	29	1A1A4R3	7	47
1A1A3Z1A	6	31	1A1A4R4	7	45
1A1A3Z1C	6	32	1A1A4R5	7	46
1A1A3Z1B	6	30	1A1A4R6	7	59
1A1A3Z1	6	28	1A1A4R7	7	28
1A1A3Z2	6	5	1A1A4R8	7	60
1A1A3Z3	6	34	1A1A4R9	7	45
1A1A3Z4	6	4	1A1A4R10	7	21
1A1A3Z4A	3	3	1A1A4R11	7	21
1A1A3Z5	6	1	1A1A4R12	7	28
1A1A4	2	21	1A1A4R13	7	61
1A1A4	7		1A1A4R14	7	32
1A1A4CR1	7	24	1A1A4R15	7	28
1A1A4CR2	7	24	1A1A4R16	7	27
1A1A4CR3	7	24	1A1A4R17	7	27
1A1A4CR4	7	24	1A1A4R18	7	27
1A1A4CR5	7	33	1A1A4R19	7	28
1A1A4CR6	7	24	1A1A4R20	7	45
1A1A4CR7	7	24	1A1A4R21	7	45
1A1A4CR8	7	24	1A1A4R22	7	54
1A1A4CR9	7	24	1A1A4R23	7	21
1A1A4CR10	7	24	1A1A4R24	7	22
1A1A4CR11	7	24	1A1A4R25	7	30
1A1A4CR12	7	24	1A1A4R26	7	18
1A1A4CR13	7	24	1A1A4R27	7	20
1A1A4CR14	7	36	1A1A4R29	7	18
1A1A4CR15	7	24	1A1A4R30	7	19
1A1A4C1	7	5	1A1A4R31	7	51
1A1A4C2	7	5	1A1A4R32	7	51
1A1A4C3	7	5	1A1A4R33	7	49
1A1A4C4	7	5	1A1A4R34	7	28
1A1A4C5	7	26	1A1A4R35	7	49
1A1A4C6	7	26	1A1A4R36	7	49
1A1A4C7	7	5	1A1A4R37	7	49
1A1A4C8	7	52	1A1A4R38	7	28
1A1A4C9	7	39	1A1A4R39	7	49
1A1A4C10	7	48	1A1A4R40	7	49
1A1A4C11	7	48	1A1A4R41	7	19
1A1A4C12	7	48	1A1A4R42	4	4
1A1A4C13	7	48	1A1A4R43	7	35
1A1A4C15	7	48	1A1A4R44	7	30
1A1A4C16	7	42	1A1A4R45	7	58
1A1A4C17	7	42	1A1A4R46	7	32
1A1A4C18	7	37	1A1A4R47	7	32
1A1A4C19	7	5	1A1A4R48	7	32
1A1A4C20	7	40	1A1A4R49	7	32
1A1A4C21	7	5	1A1A4R50	7	50
1A1A4C22	7	40	1A1A4R51	7	41
1A1A4C23	7	37	1A1A4R52	7	38
1A1A4J1C	7	3	1A1A4R53	7	41
1A1A4J1A	7	1	1A1A4R54	7	38
1A1A4J1B	7	2	1A1A4R55	7	14
1A1A4J1	7	44	1A1A4R56	7	19
1A1A4P1	4		1A1A4U1	7	43
1A1A4P1	7	56	1A1A4U2	7	29
1A1A4P1A	7	53	1A1A4U3	7	29
1A1A4P1Z1	4	4	1A1A4U4	7	55
1A1A4P1Z2	4	1	1A1A4U5	7	29

Section VI. NATIONAL STOCK NUMBER AND PART NUMBER INDEX - Continued

REFERENCE DESIGNATOR	FIG NO.	ITEM NO.	REFERENCE DESIGNATOR	FIG NO.	ITEM NO.
1A1A4U6	7	29	1A1A6C9	9	7
1A1A4Z1	7	64	1A1A6C10	9	7
1A1A4Z2	7	23	1A1A6J1A	9	26
1A1A4Z4	7	17	1A1A6J1C	9	28
1A1A4Z4A	7	16	1A1A6J1B	9	27
1A1A4Z5	7	57	1A1A6J1	9	25
1A1A4Z6	7	7	1A1A6P1	4	
1A1A4Z7	7	8	1A1A6P1	9	18
1A1A4Z8	7	63	1A1A6P1A	9	17
1A1A4Z10	7	15	1A1A6P1Z1	4	4
1A1A5	2	4	1A1A6P1Z2	4	1
1A1A5	8		1A1A6P1Z3	4	5
1A1A5C1	8	22	1A1A6P1Z4	4	3
1A1A5C2	8	22	1A1A6P1Z5	4	2
1A1A5C3	8	19	1A1A6U1	9	13
1A1A5C4	8	19	1A1A6U2	9	10
1A1A5C5	8	19	1A1A6U3	9	11
1A1A5C6	8	19	1A1A6U4	9	5
1A1A5C7	8	19	1A1A6U5	9	6
1A1A5C8	8	19	1A1A6U6	9	8
1A1A5C9	8	19	1A1A6U7	9	5
1A1A5C10	8	19	1A1A6U8	9	5
1A1A5J1B	8	9	1A1A6U9	9	21
1A1A5J1C	8	8	1A1A6U10	9	12
1A1A5J1A	8	7	1A1A6U11	9	22
1A1A5J1	8	6	1A1A6U12	9	9
1A1A5P1	4		1A1A6U13	9	11
1A1A5P1A	8	27	1A1A6U14	9	10
1A1A5P1Z1	4	24	1A1A6U15	9	12
1A1A5P1Z2	4	4	1A1A6U16	9	9
1A1A5P1Z3	4	1	1A1A6U17	9	6
1A1A5P1Z4	4	5	1A1A6U18	9	19
1A1A5P1Z5	4	3	1A1A6U19	9	20
1A1A5U1	8	2	1A1A6U20	9	8
1A1A5U2	8	16	1A1A6U21	9	8
1A1A5U3	8	3	1A1A6U22	9	8
1A1A5U4	8	17	1A1A6U23	9	23
1A1A5U5	8	10	1A1A6U24	9	14
1A1A5U6	8	11	1A1A6U25	9	8
1A1A5U7	8	13	1A1A6U26	9	8
1A1A5U8	8	16	1A1A6U27	9	19
1A1A5U9	8	3	1A1A6U28	9	12
1A1A5U10	8	14	1A1A6U29	9	8
1A1A5U11	8	2	1A1A6U30	9	8
1A1A5U12	8	4	1A1A6U31	9	16
1A1A5U13	8	2	1A1A6U32	9	16
1A1A5U14	8	2	1A1A6Z1	9	3
1A1A5U15	8	14	1A1A6Z2	9	24
1A1A5U16	8	17	1A1A6Z3	9	4
1A1A5U17	8	20	1A1A6Z3A	2	2
1A1A5U18	8	2	1A1A6Z4	9	1
1A1A5U19	8	4	1A1J9B	2	7
1A1A5U20	8	29	1A1J9	2	17
1A1A5U21	8	28	1A1J9C	2	8
1A1A5U22	8	2	1A1J9D	2	12
1A1A5U23	8	25	1A1J9A	2	6
1A1A5U24	8	25	1A1J10A	2	6
1A1A5U25	8	21	1A1J10D	2	12
1A1A5U26	8	2	1A1J10C	2	8
1A1A5U27	8	25	1A1J10	2	11
1A1A5U28	8	25	1A1J10B	2	7
1A1A5U29	8	23	1A1P9	2	16
1A1A5U30	8	26	1A1P12	2	14
1A1A5U31	8	23	1A1S5	2	43
1A1A5U32	8	23	1A1W1	2	15
1A1A5Z1	8	18	1A1W1	10	
1A1A5Z2	8	1	1A1W1P11	10	1
1A1A5Z3	8	15	1A1W1P11	11	
1A1A5Z3A	8	12	1A1W1P11Z1	11	2
1A1A5Z4	8	30	1A1W1P11Z2	11	3
1A1A5Z10	8	5	1A1W1P11Z3	11	5
1A1A6	2	3	1A1W1P11Z4	11	6
1A1A6	9		1A1W1P11Z5	11	12
1A1A6C1	9	15	1A1W1P12	10	2
1A1A6C2	9	15	1A1W1Z2	10	3
1A1A6C3	9	7	1A1Z1	2	22
1A1A6C4	9	7	1A1Z1	12	
1A1A6C5	9	7	1A1Z1A1	12	15
1A1A6C6	9	7	1A1Z1P7	11	
1A1A6C7	9	7	1A1Z1P7Z1	11	2
1A1A6C8	9	7	1A1Z1P7Z2	11	3
			1A1Z1P7Z3	11	5

Section VI. NATIONAL STOCK NUMBER AND PART NUMBER INDEX - Continued

REFERENCE DESIGNATOR	FIG NO.	ITEM NO.	REFERENCE DESIGNATOR	FIG NO.	ITEM NO.
1A1Z1P7Z4	11	6	1C1	1	29
1A1Z1P7Z5	11	12	1C2	1	29
1A1Z1P8	11		1DS1	1	75
1A1Z1P8	12	6	1E1C	1	50
1A1Z1P8Z1	11	2	1E1A	1	53
1A1Z1P8Z2	11	3	1E1D	1	36
1A1Z1P8Z3	11	5	1E1	1	39
1A1Z1P8Z4	11	6	1E1B	1	27
1A1Z1P8Z5	11	12	1E2	1	39
1A1Z1P10	12	16	1F1	1	66
1A1Z1S1	12	18	1PS1	1	18
1A1Z1S2	12	18	1PS1A	1	2
1A1Z1S3	12	18	1R1D	1	17
1A1Z1S4	12	18	1R1A	1	14
1A1Z1Z1	12	17	1R1	1	23
1A1Z1Z2C	12	13	1R1C	1	16
1A1Z1Z2B	12	12	1R1B	1	15
1A1Z1Z2D	12	14	1R2	1	23
1A1Z1Z2A	12	11	1R3C	1	16
1A1Z1Z2	12	10	1R3D	1	17
1A1Z1Z3	12	20	1R3A	1	14
1A1Z1Z4	12	21	1R3	1	13
1A1Z1Z5	12	7	1R3B	1	15
1A1Z1Z6	12	19	1R4	1	13
1A1Z1Z8	12	5	1S1	1	73
1A1Z1Z9	12	9	1TB1D	1	11
1A1Z1Z10	12	8	1TB1A	1	8
1A1Z2A	2	2	1TB1C	1	10
1A1A2	2	31	1TB1	1	6
1A1Z3	2	42	1TB1B	1	9
1A1Z3A	2	2	1T1B	1	63
1A1Z4A	2	2	1T1	1	5
1A1Z4	2	1	1T1A	1	62
1A1Z5	2	25	1T1C	1	64
1A1Z5D	2	26	1U1A	1	62
1A1Z5C	2	8	1U1	1	24
1A1Z5A	2	27	1VR1	1	21
1A1Z5B	2	7	1VR2	1	21
1A1Z6B	2	7	1W1B	1	27
1A1Z6C	2	8	1W1	1	60
1A1Z6D	2	26	1W1C	1	35
1A1Z6A	2	27	1W1A	1	55
1A1Z6	2	30	1W1D	1	36
1A1Z7	2	33	1W1	1	
1A1Z8	2	45	1W1J2	13	2
1A1Z8B	2	36	1W1J3	13	3
1A1Z8C	2	37	1W1J4	13	2
1A1Z8A	2	44	1W1J5	13	3
1A1Z9C	2	8	1W1P12	13	4
1A1Z9A	2	10	1W1Z1	13	1
1A1Z9B	2	7	1W1Z2	13	5
1A1Z9	2	9	1W2	1	65
1A1Z10	2	40	1W2	14	
1A1Z10C	2	7	1W2P9	14	3
1A1Z10A	2	6	1W2Z1	14	1
1A1Z10D	2	8	1W2Z2	14	2
1A1Z10B	2	41	1W3	1	12
1A1Z10E	2	12	1W3	15	
1A1Z11A	2	6	1W3P3	15	4
1A1Z11C	2	8	1W3Z1	15	1
1A1Z11B	2	7	1W3Z2	15	2
1A1Z11	2	5	1W3Z3	15	3
1A1Z12	2	28	1W4	1	71
1A1Z12B	2	7	1W4D	1	36
1A1Z12A	2	29	1W4A	1	55
1A1Z12C	2	8	1W4C	1	35
1A1Z13	2	24	1W4B	1	27
1A1Z14	2	32	1W4	16	
1A1Z15	2	34	1W4J1	16	3
1A1Z15A	2	35	1W4Z1	16	1
1A1Z15C	2	37	1W4Z2	16	2
1A1Z15B	2	36	1XF1	1	67
1A1Z16A	2	39	1Z1	1	78
1A1Z16	2	38	1Z2	1	7
1A1Z17	2	13	1Z3D	1	36
1B1B	1	56	1Z3	1	48
1B1	1	54	1Z3A	1	53
1B1A	1	55	1Z3C	1	35
1CR1	1	41	1Z3B	1	27
1CR2	1	38	1Z4	1	52
1CR3	1	38	1Z5	1	30
1CR4	1	41	1Z5E	1	11

Section VI. NATIONAL STOCK NUMBER AND PART NUMBER INDEX - Continued

REFERENCE DESIGNATOR	FIG NO.	ITEM NO.	REFERENCE DESIGNATOR	FIG NO.	ITEM NO.
1Z5A	1	31			
1Z5D	1	10			
1Z5B	1	25			
1Z5C	1	32			
1Z6	1	74			
1Z7	1	68			
1Z8	1	58			
1Z9	1	33			
1Z9B	1	27			
1Z96	1	28			
1Z10A	1	28			
1Z10B	1	27			
1Z10	1	26			
1Z11	1	1			
1Z11A	1	2			
1Z11C	1	4			
1Z11B	1	3			
1Z12B	1	3			
1Z12C	1	4			
1Z12A	1	2			
1Z12D	1	59			
1Z12	1	61			
1Z13	1	20			
1Z13A	1	22			
1Z14B	1	27			
1Z14	1	34			
1Z14A	1	36			
1A14C	1	35			
1Z15	1	40			
1Z15A	1	22			
1A16	1	37			
1Z17	1	70			
1Z17A	1	22			
1Z18A	1	22			
1Z18	1	42			
1Z19	1	72			
1Z19A	1	22			
1Z20	1	46			
1Z21	1	43			
1Z21A	1	22			
1Z22A	1	77			
1Z22	1	76			
1Z23	1	57			
1Z23B	1	35			
1Z23A	1	49			

By Order Of the Secretary Of the Army:

BERNARD W. ROGERS  
*General, United States Army*  
*Chief Of Staff*


Official:

PAUL T. SMITH  
*Major General, United States Army*  
*The Adjutant General*

☆U.S. GOVERNMENT PRINTING OFFICE: 1976 241-379-3040B 1-3



RECOMMENDED CHANGES TO EQUIPMENT TECHNICAL PUBLICATIONS

 <p><i>THEN...JOT DOWN THE DOPE ABOUT IT ON THIS FORM. CAREFULLY TEAR IT OUT, FOLD IT AND DROP IT IN THE MAIL.</i></p>		<b>SOMETHING WRONG WITH PUBLICATION</b>	
		FROM: (PRINT YOUR UNIT'S COMPLETE ADDRESS)	
PUBLICATION NUMBER		PUBLICATION DATE	PUBLICATION TITLE
DATE SENT			
<b>BE EXACT PIN-POINT WHERE IT IS</b>			
PAGE NO.	PARA-GRAPH	FIGURE NO.	TABLE NO.
<b>IN THIS SPACE, TELL WHAT IS WRONG AND WHAT SHOULD BE DONE ABOUT IT.</b>			
PRINTED NAME, GRADE OR TITLE AND TELEPHONE NUMBER			SIGN HERE

DA FORM 1 JUL 79 2028-2

PREVIOUS EDITIONS ARE OBSOLETE.

P.S.--IF YOUR OUTFIT WANTS TO KNOW ABOUT YOUR RECOMMENDATION MAKE A CARBON COPY OF THIS AND GIVE IT TO YOUR HEADQUARTERS.

## The Metric System and Equivalents

### Linear Measure

1 centimeter = 10 millimeters = .39 inch  
 1 decimeter = 10 centimeters = 3.94 inches  
 1 meter = 10 decimeters = 39.37 inches  
 1 dekameter = 10 meters = 32.8 feet  
 1 hectometer = 10 dekameters = 328.08 feet  
 1 kilometer = 10 hectometers = 3,280.8 feet

### Weights

1 centigram = 10 milligrams = .15 grain  
 1 decigram = 10 centigrams = 1.54 grains  
 1 gram = 10 decigrams = .035 ounce  
 1 decagram = 10 grams = .35 ounce  
 1 hectogram = 10 decagrams = 3.52 ounces  
 1 kilogram = 10 hectograms = 2.2 pounds  
 1 quintal = 100 kilograms = 220.46 pounds  
 1 metric ton = 10 quintals = 1.1 short tons

### Liquid Measure

1 centiliter = 10 milliliters = .34 fl. ounce  
 1 deciliter = 10 centiliters = 3.38 fl. ounces  
 1 liter = 10 deciliters = 33.81 fl. ounces  
 1 dekaliter = 10 liters = 2.64 gallons  
 1 hectoliter = 10 dekaliters = 26.42 gallons  
 1 kiloliter = 10 hectoliters = 264.18 gallons

### Square Measure

1 sq. centimeter = 100 sq. millimeters = .155 sq. inch  
 1 sq. decimeter = 100 sq. centimeters = 15.5 sq. inches  
 1 sq. meter (centare) = 100 sq. decimeters = 10.76 sq. feet  
 1 sq. dekameter (are) = 100 sq. meters = 1,076.4 sq. feet  
 1 sq. hectometer (hectare) = 100 sq. dekameters = 2.47 acres  
 1 sq. kilometer = 100 sq. hectometers = .386 sq. mile

### Cubic Measure

1 cu. centimeter = 1000 cu. millimeters = .06 cu. inch  
 1 cu. decimeter = 1000 cu. centimeters = 61.02 cu. inches  
 1 cu. meter = 1000 cu. decimeters = 35.31 cu. feet

## Approximate Conversion Factors

<i>To change</i>	<i>To</i>	<i>Multiply by</i>	<i>To change</i>	<i>To</i>	<i>Multiply by</i>
inches	centimeters	2.540	ounce-inches	Newton-meters	.007062
feet	meters	.305	centimeters	inches	.394
yards	meters	.914	meters	feet	3.280
miles	kilometers	1.609	meters	yards	1.094
square inches	square centimeters	6.451	kilometers	miles	.621
square feet	square meters	.093	square centimeters	square inches	.155
square yards	square meters	.836	square meters	square feet	10.764
square miles	square kilometers	2.590	square meters	square yards	1.196
acres	square hectometers	.405	square kilometers	square miles	.386
cubic feet	cubic meters	.028	square hectometers	acres	2.471
cubic yards	cubic meters	.765	cubic meters	cubic feet	35.315
fluid ounces	milliliters	29.573	cubic meters	cubic yards	1.308
pints	liters	.473	milliliters	fluid ounces	.034
quarts	liters	.946	liters	pints	2.113
gallons	liters	3.785	liters	quarts	1.057
ounces	grams	28.349	liters	gallons	.264
pounds	kilograms	.454	grams	ounces	.035
short tons	metric tons	.907	kilograms	pounds	2.205
pound-feet	Newton-meters	1.356	metric tons	short tons	1.102
pound-inches	Newton-meters	.11296			

### Temperature (Exact)

°F	Fahrenheit temperature	5/9 (after subtracting 32)	Celsius temperature	°C
----	------------------------	----------------------------	---------------------	----

